

Pristine Paradise.



# PALAU



## REGIONAL CONSULTATIVE WORKSHOP ON RENEWABLE ENERGY DEVELOPMENTS IN THE PACIFIC

Venue: Suva, Fiji

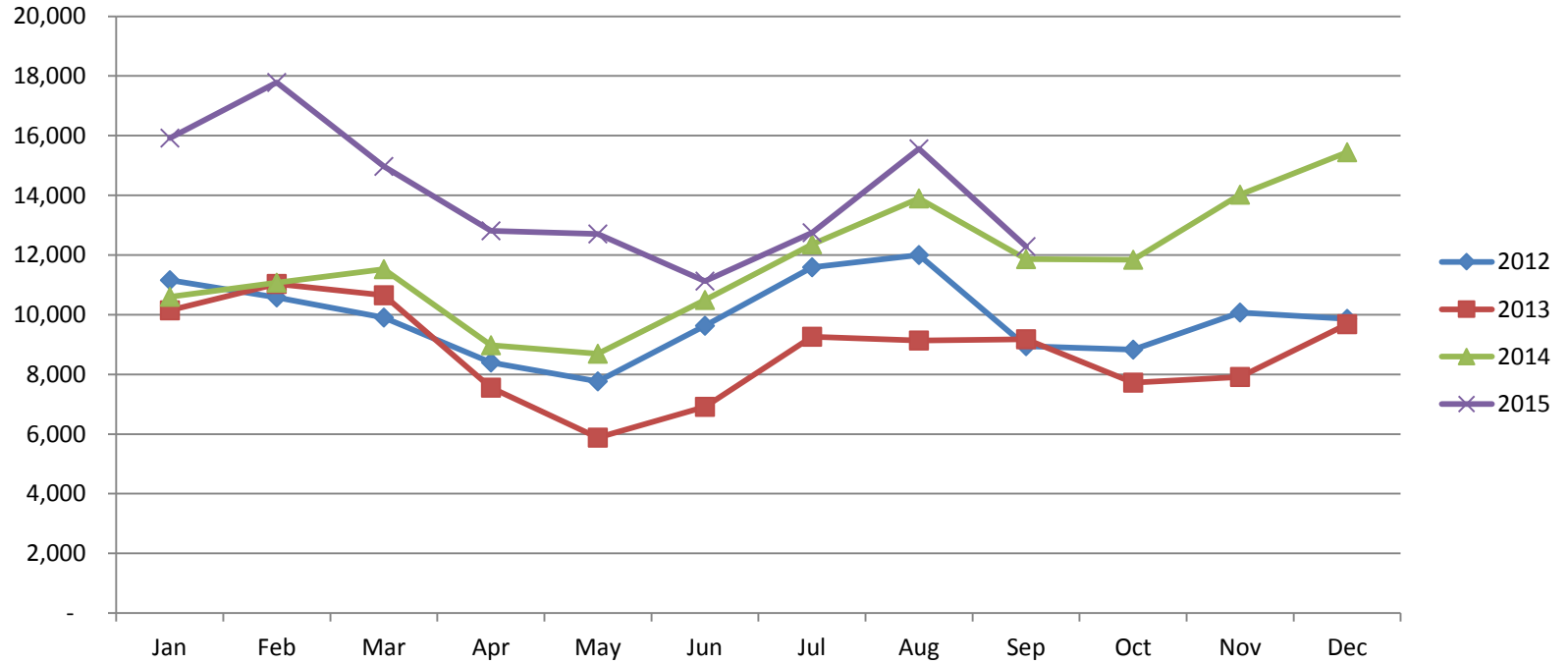
Date: November 11-13, 2015

Presented By: Anna Hideo  
Operations & Strategic Planning  
Manager  
Palau Visitors Authority





# PALAU Visitors Trend



| Year        | Jan    | Feb    | Mar    | Apr    | May    | Jun    | Jul    | Aug    | Sep    | Oct    | Nov    | Dec    | Total YTD | IYA |
|-------------|--------|--------|--------|--------|--------|--------|--------|--------|--------|--------|--------|--------|-----------|-----|
| <b>2012</b> | 11,161 | 10,577 | 9,909  | 8,402  | 7,770  | 9,627  | 11,591 | 12,002 | 8,949  | 8,829  | 10,075 | 9,862  | 118,754   | 109 |
| <b>2013</b> | 10,141 | 11,030 | 10,657 | 7,558  | 5,879  | 6,909  | 9,264  | 9,140  | 9,178  | 7,722  | 7,909  | 9,679  | 105,066   | 88  |
| <b>2014</b> | 10,597 | 11,073 | 11,528 | 8,975  | 8,691  | 10,491 | 12,355 | 13,901 | 11,864 | 11,845 | 14,018 | 15,446 | 140,784   | 134 |
| <b>2015</b> | 15,920 | 17,787 | 14,966 | 12,812 | 12,705 | 11,129 | 12,752 | 15,557 | 12,286 |        |        |        | 125,914   | 127 |

Pristine Paradise.

# PALAU



## Accommodations in Palau

There are about 53 accommodations varying from resorts, hotels, motels, lodges, cottages, bungalows and about 7 liveaboards where customers can stay and dive aboard a vessel.

**TOTAL 1,750 rooms (as of October 2015)  
available in Palau**





# Pristine Paradise. PALAU



## CASE STUDY I (Ngellil Nature Island Resort)

Ngellil Island Resort is an island resort located in Airai State, Republic of Palau. It takes about 25 minutes by boat to go to the island. The structure of the island resort is made using natural materials such as bamboo, pandanus. It has implemented non energy consuming technology such as cool roof that reduces the need for air conditioning system and with glass roof to let in sunlight thus requiring less use of electricity. There are a total of 8 rooms which has shared bathrooms and toilets for male and female. Water tanks are used to collect rain water for showering and cooking. A solar powered heating system is used for hot water. At this time the business is working on switching their power system from using portable generator to solar power in the near future.



# Pristine Paradise. PALAU



## CASE STUDY II (Palau Pacific Resort)

64 acre garden paradise

160 rooms

private 1,000 feet pristine white beach

Uses Solar Photovoltaic (33,000/kwh per  
year)

Operating & Maintenance cost \$1,000.00

Self funded by hotel





# PALAU

## Challenges and Risks in Deploying RE in the tourism sector

### CHALLENGES

- Lack of manpower and expertise
- Will need training and education on energy efficiency and conservation
- Resistance to change and new business models

### RISKS

- Need to study further to assess risks involved (ex. RE policies, Leadership's cooperation etc)
- If not managed properly, can be a cause for inefficient and unreliable energy plan which can result in undesirable services





# PALAU

## Challenges and Risks in Deploying RE in the tourism sector

### FUTURE PLANS

- Need to establish an organization to appropriately develop a comprehensive, long-term strategic renewable energy plan for Palau
- Develop a vision, mission and goals for reducing dependence on fossil fuels, improving energy efficiency, and developing renewable energy resources

### OPPORTUNITIES

- To engage in national and regional efforts to address island energy concerns
- To seek possibility of reducing energy costs for businesses and regular households
- Reduction of reliance and expenditures on fossil fuels
- With reduction in operational costs due to usage of RE more people may be able to start new businesses that are more Eco-friendly and in line with conservation efforts
- Securing long term energy supplies at affordable cost
- Contribute to carbon emission reduction targets

# Kom Kmal Mesulang!

