

# **17<sup>th</sup> Meeting of the IRENA Council**

## **Progress Report**

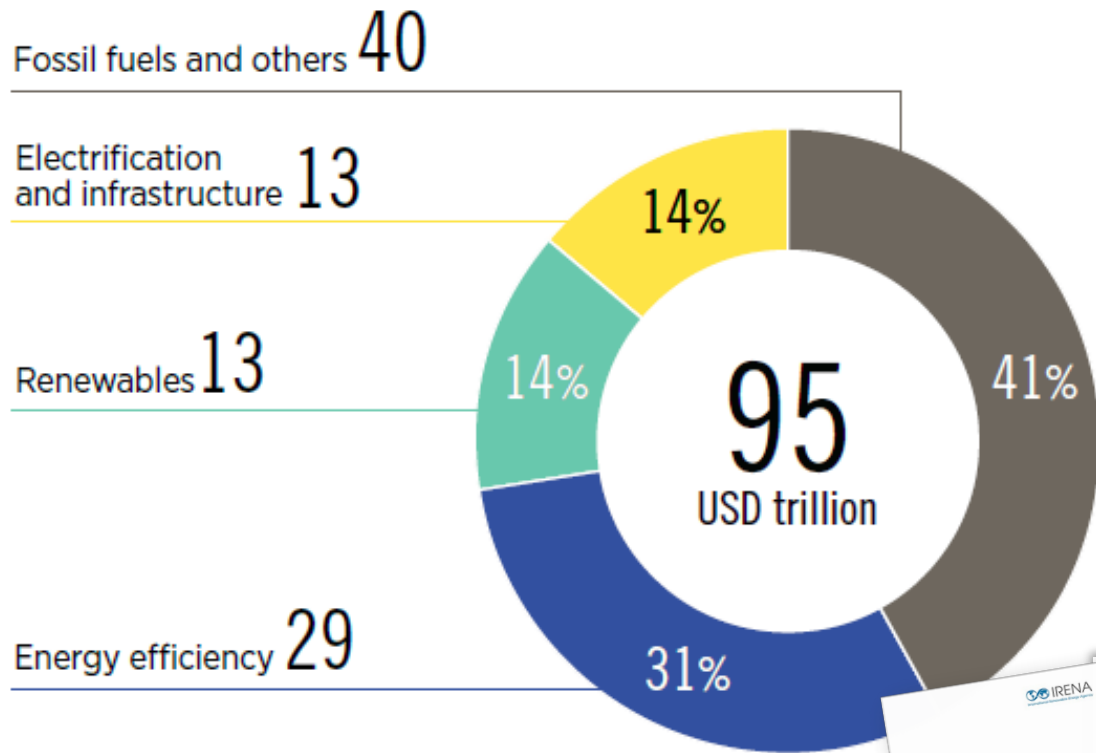
**Mr. Dolf Gielen**  
**Ms. Rabia Ferroukhi**  
**Mr. Gurbuz Gonul**

**25-26 June 2019 • Sheraton Hotel • Abu Dhabi**

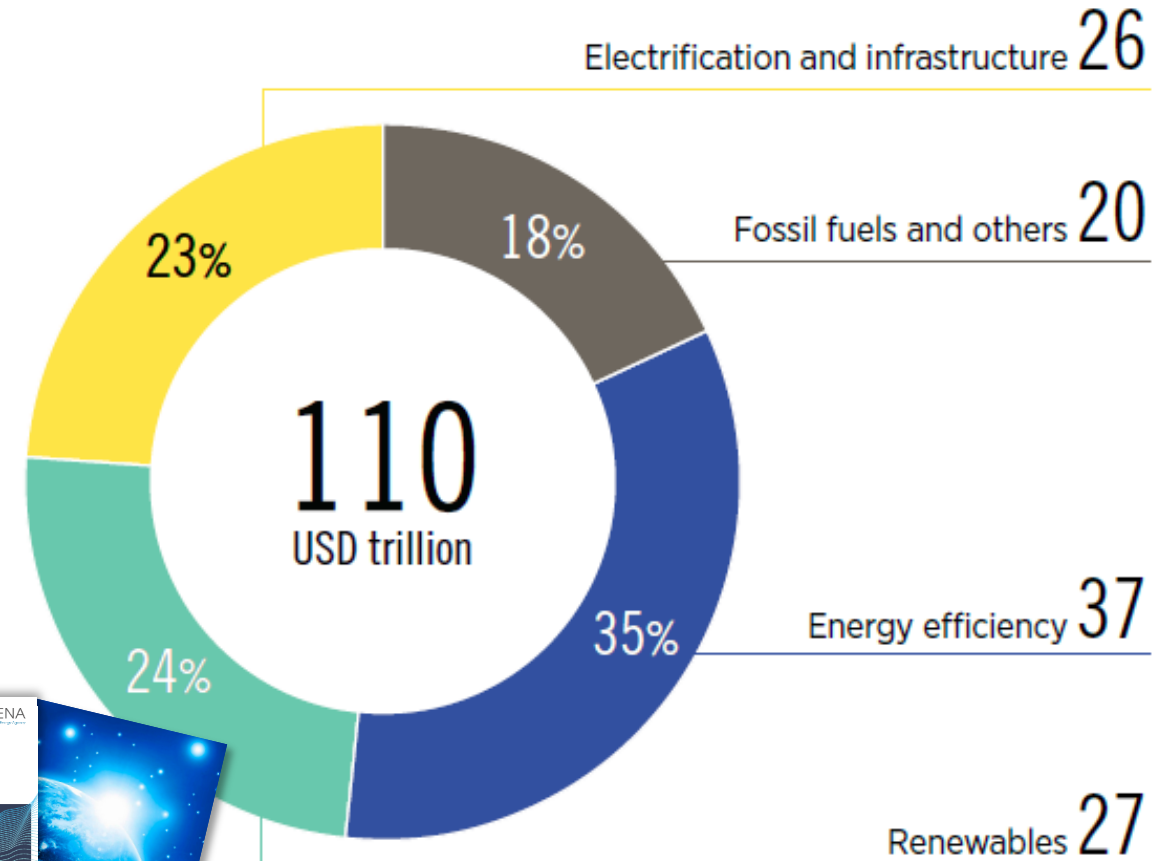
# Centre of Excellence for Energy Transformation

---

Reference Case cumulative investments, 2016-2050  
(USD trillion)

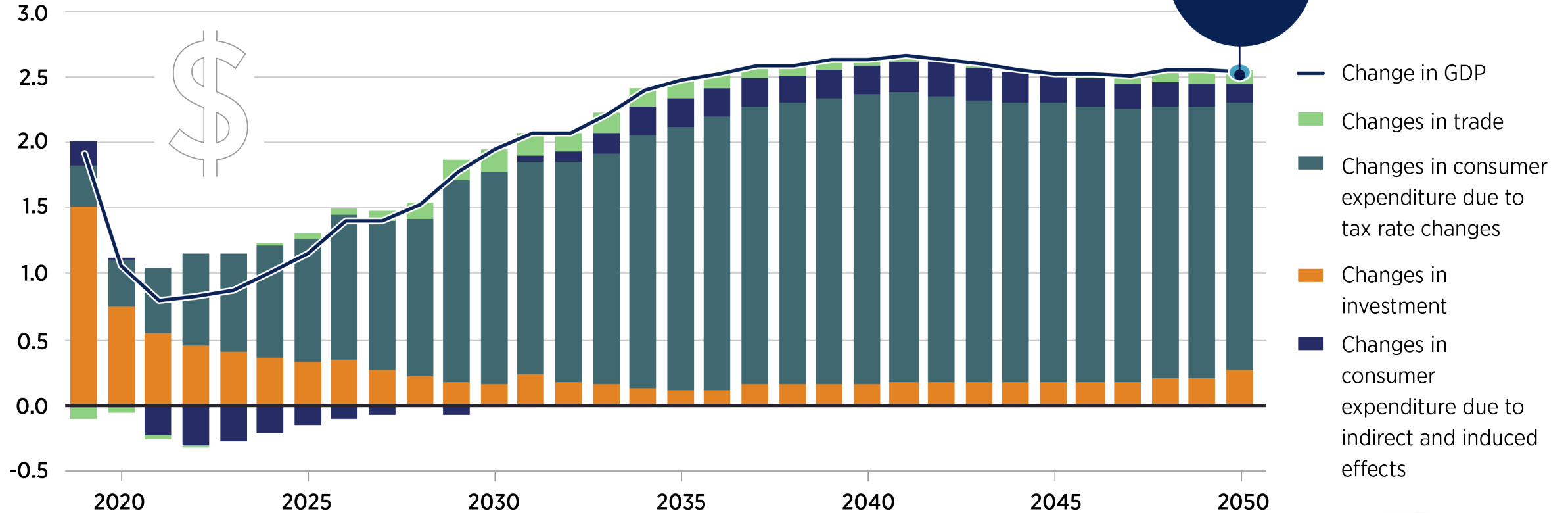


REmap Case cumulative investments, 2016-2050  
(USD trillion)



# The energy transformation boosts global GDP

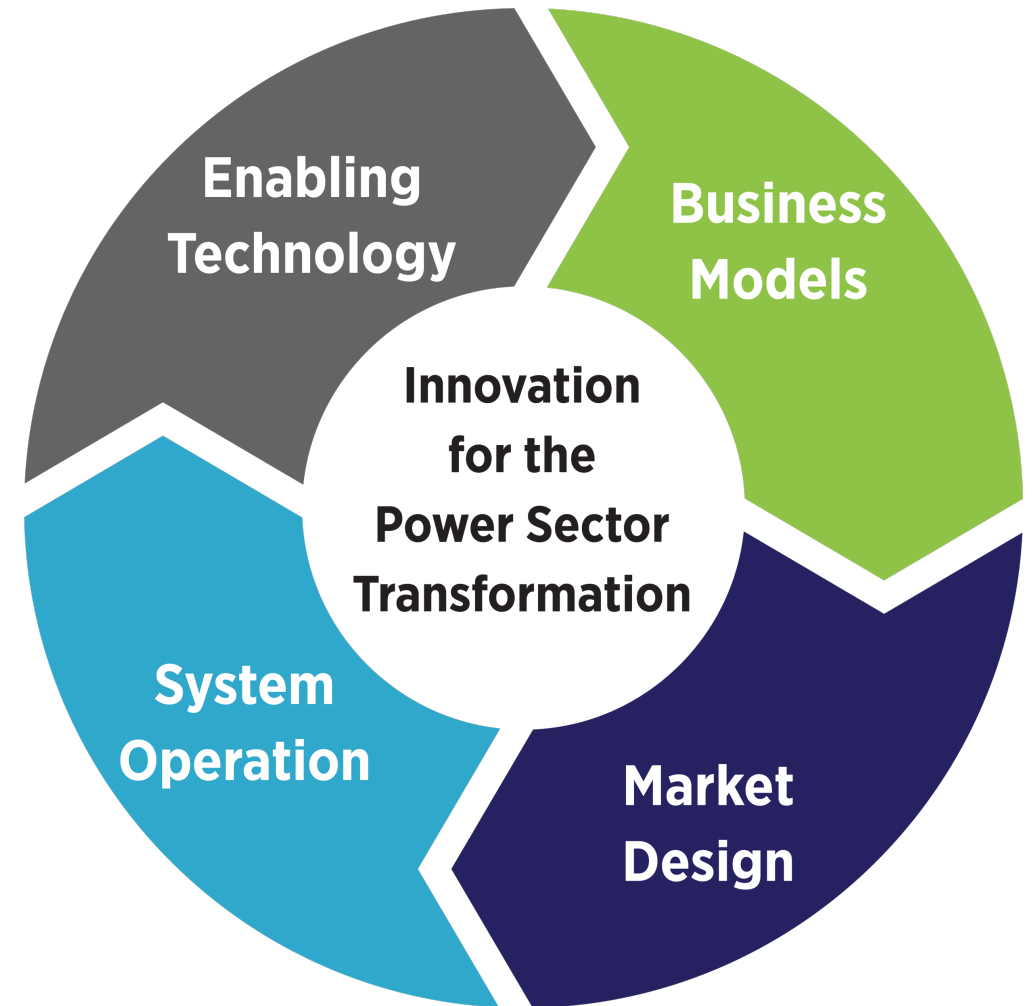
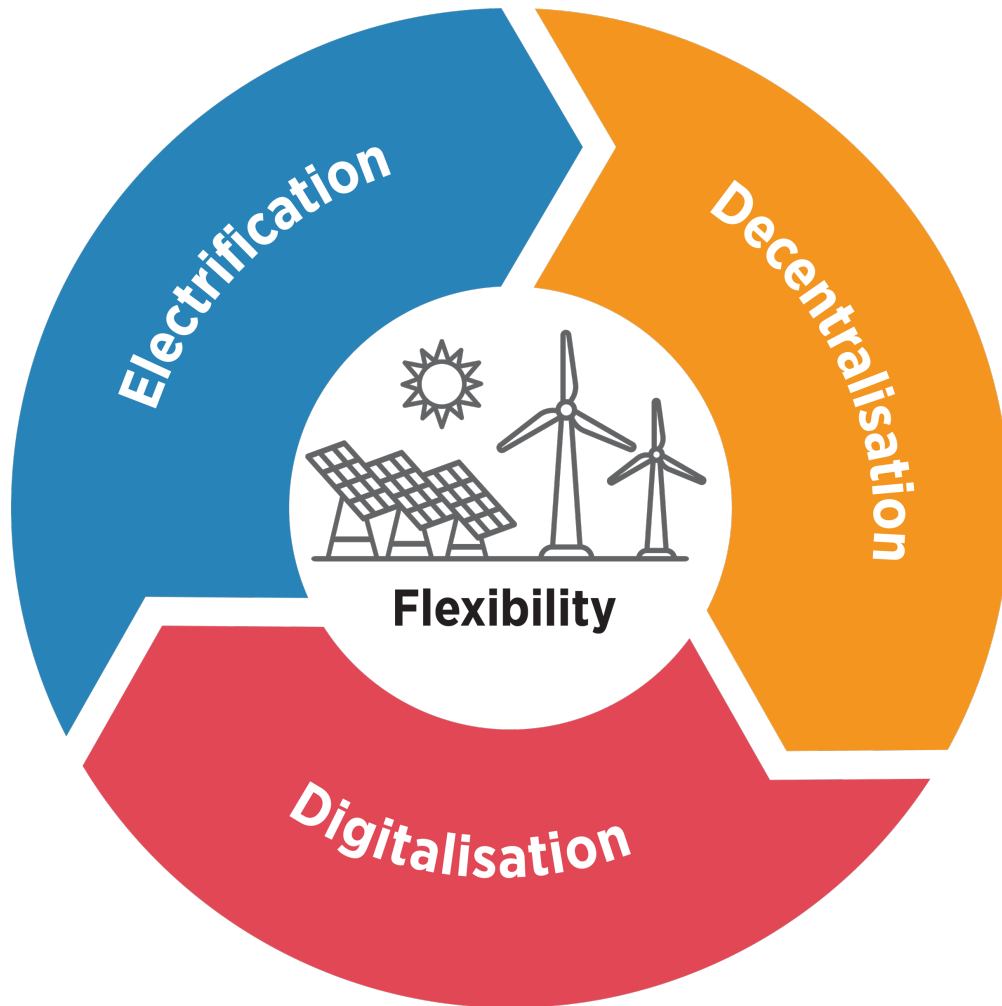
% difference on GDP from Reference Case



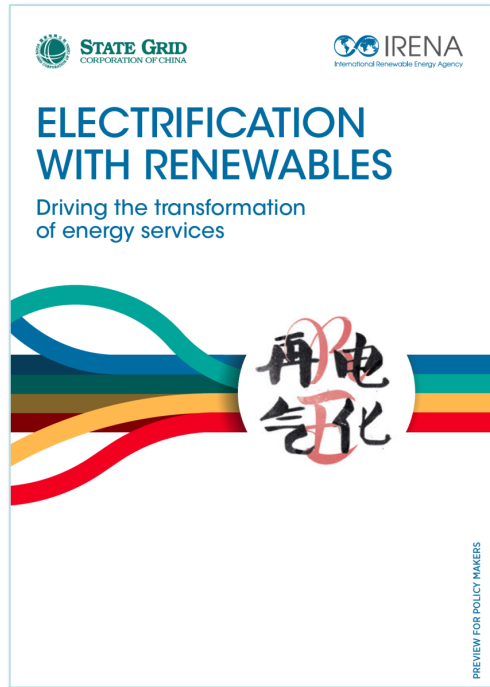
- Every dollar spent in the global energy transformation saves 3 to 7 USD.
- Global GDP is boosted by 2.5% in 2050, with a cumulative gain of USD 99 trillion from 2019-2050, largely due to increases in consumer expenditure.



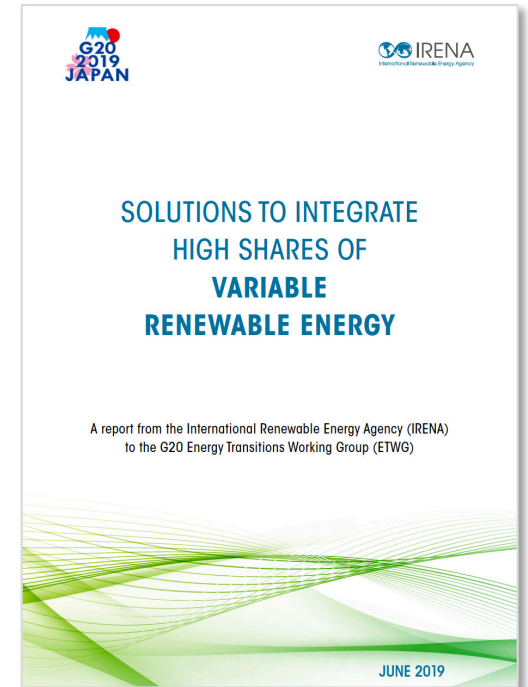
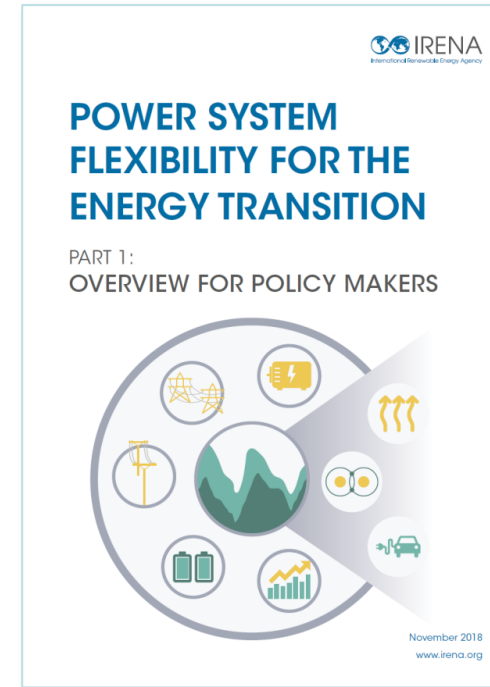
## Three system trends and four dimensions of innovation



## Flexibility and sector coupling



## Flexibility concepts and innovation toolbox

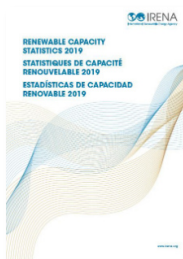
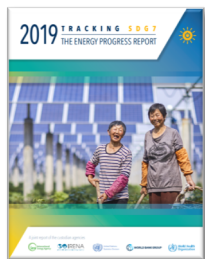
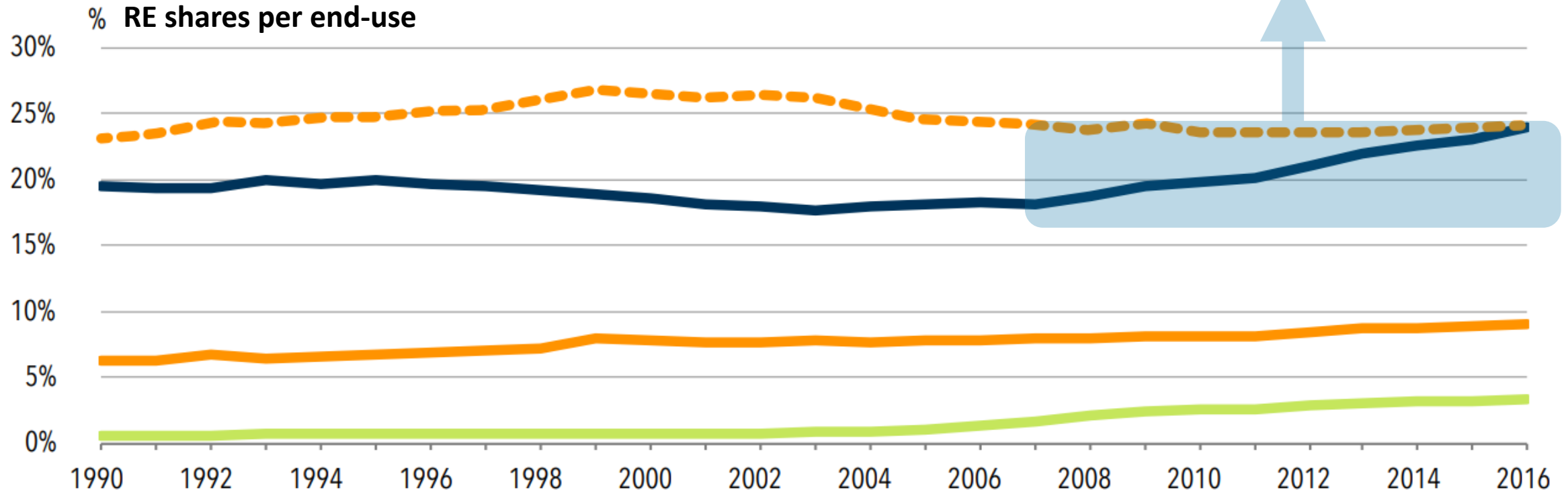


Strong demand for **Flextool & VRE integration support**

# Global Voice of Renewables

---

- Decreasing costs and potentials
- Socio-economic benefit, such as jobs creation
- Supporting policies

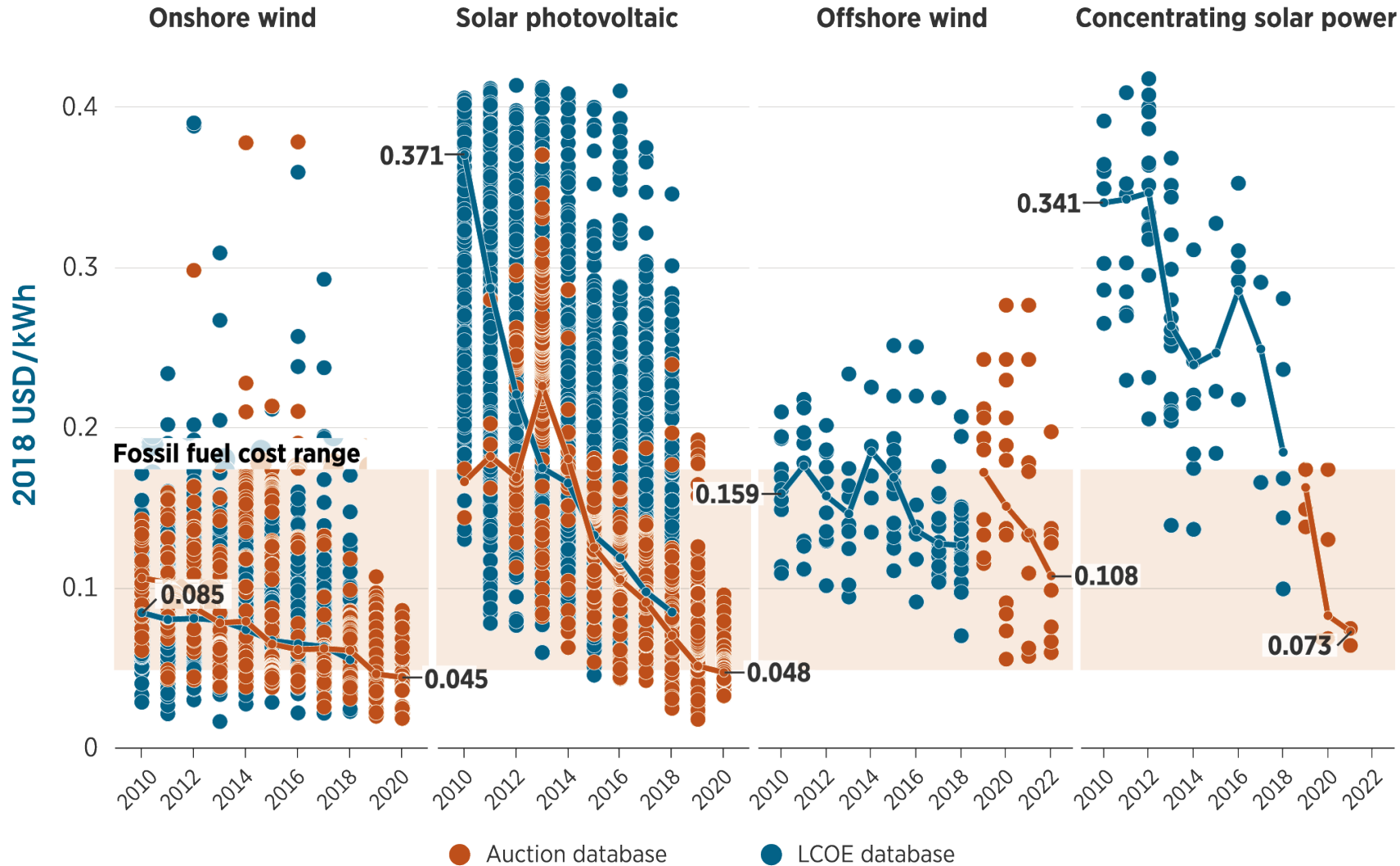


- Heat (including traditional uses of biomass)
- Transport
- Electricity
- Modern heat (excluding traditional uses of biomass)

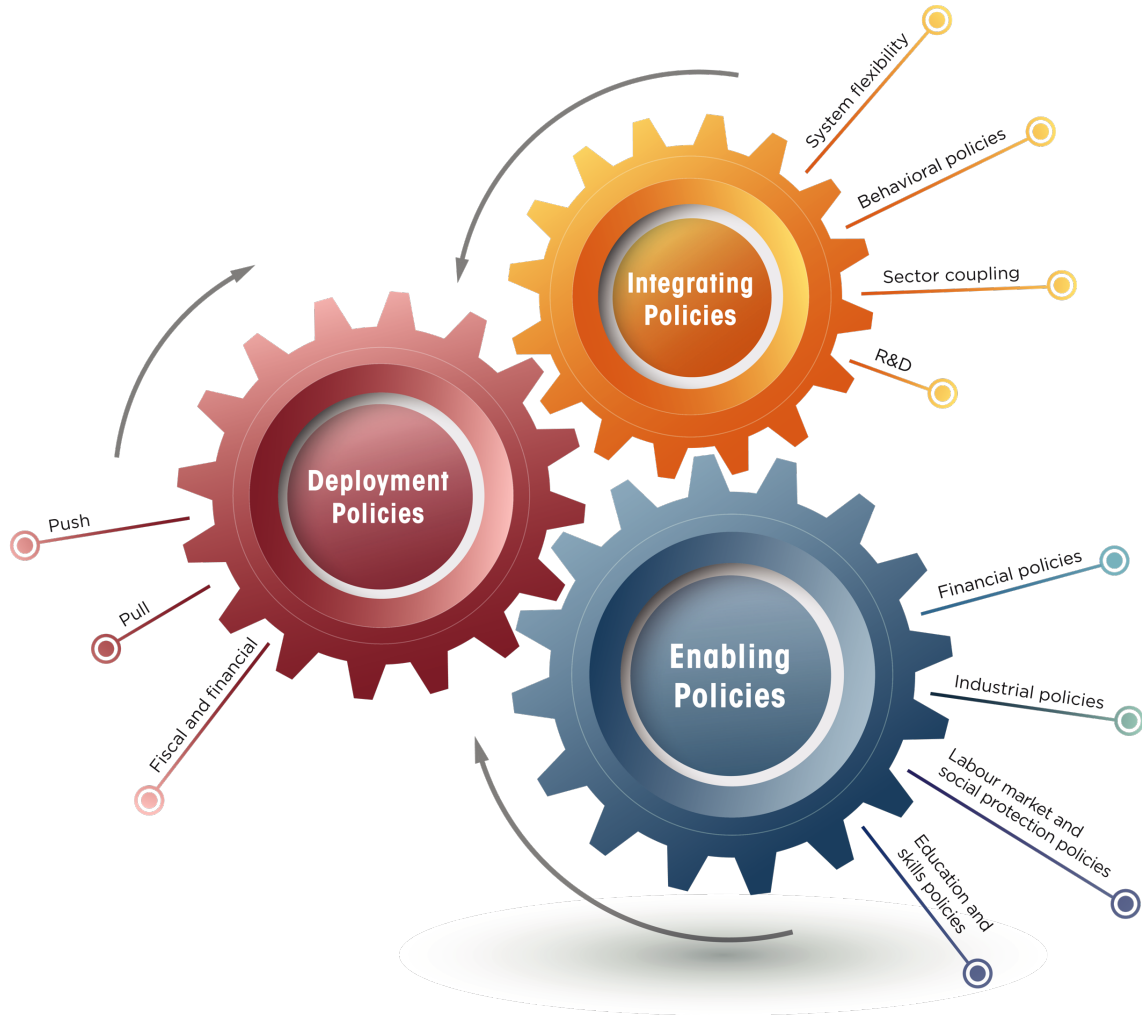


# Decreasing costs and potential

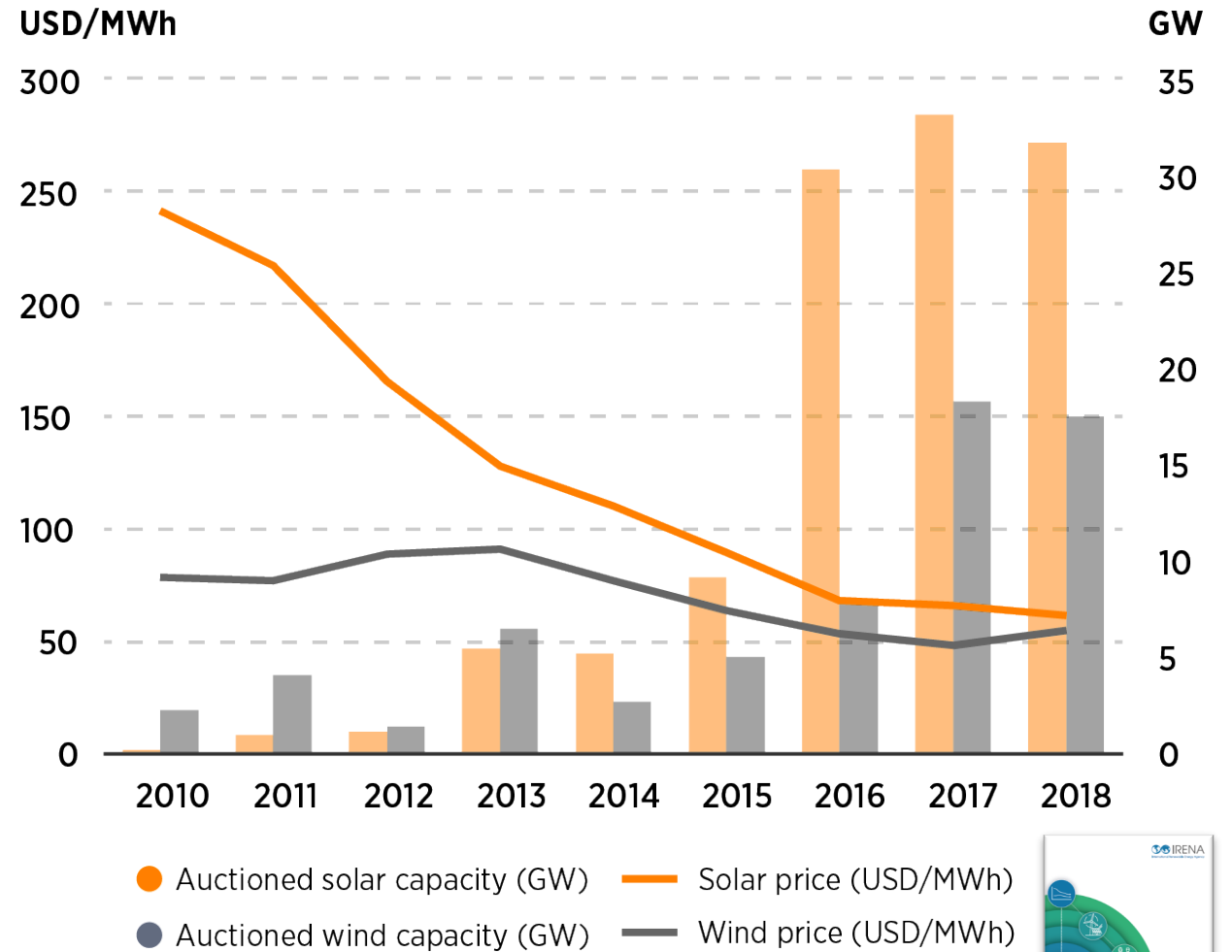
Global weighted average total installed costs and project percentile ranges for RE plants, 2010–2018



## Mix of policies



## Analysis of auctions



# Jobs as a prime driver of the energy transition



**million jobs in 2018**

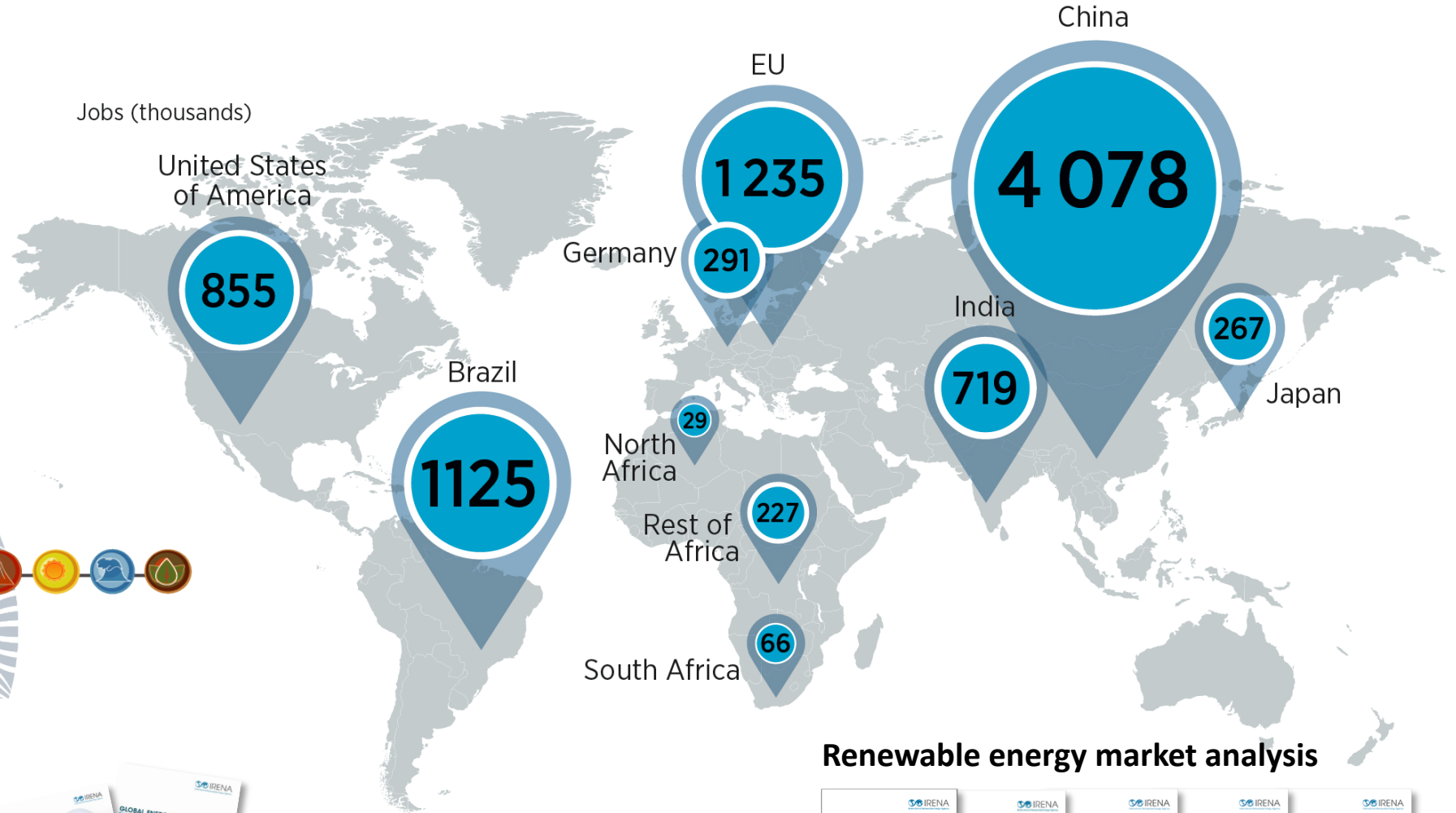
**375 000 in energy access**

**32% women**

**42 million by 2050**



Jobs (thousands)



## Renewable energy market analysis

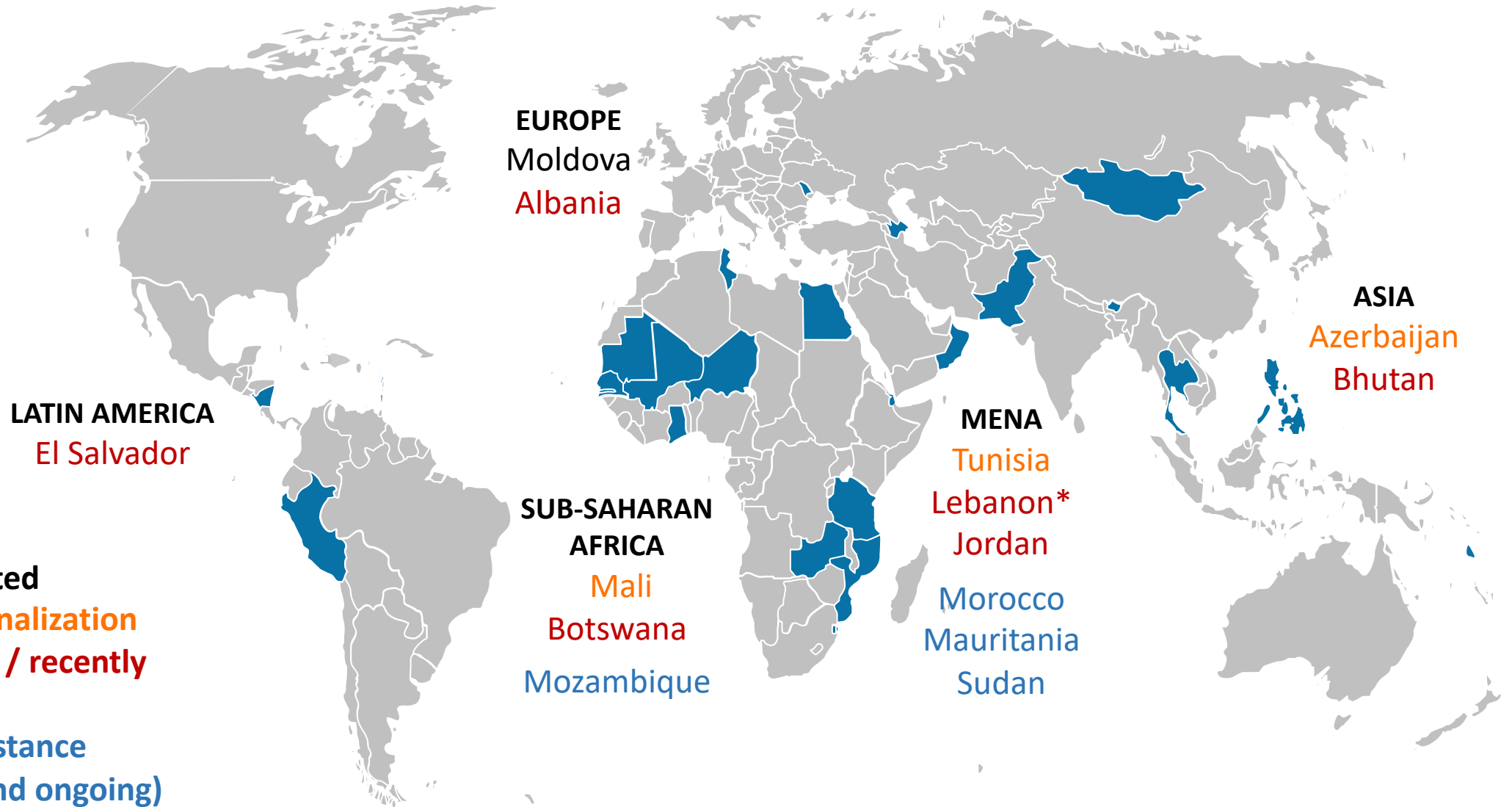


# **Network Hub**

## **Source of Advice and Support**

---





- **RRAs Completed**
- **RRAs under finalization**
- **RRAs ongoing / recently initiated**
- **Technical assistance (completed and ongoing)**

\* RRA-REmap combined

## Global Geothermal Alliance



- 46 Member Countries and 38 Partner Institutions
- Annual GGA Meeting (Jan 2019)
- Resource Assessment
- Geothermal Direct Use
- Market Assessment

## SIDS Lighthouses



- 36 SIDS and 23 Partners
- SIDS Ministerial meeting (Jan 2019)
- Knowledge sharing platform
- Capacity building
- Grid intergration studies
- Energy roadmaps
- Site appraisal
- NDCs

## Off-Grid RE (IOREC) Platform



- RE Entrepreneurship Support Facilities in Southern Africa
- Certification for Sustainable Energy Skills in West Africa
- RE Solutions for Refugee Settings
- RE Solutions for Healthcare Facilities
- RE Solutions for Food Security

شكرا لكم

谢谢

Thank you

Merci

Благодарю вас

Gracias