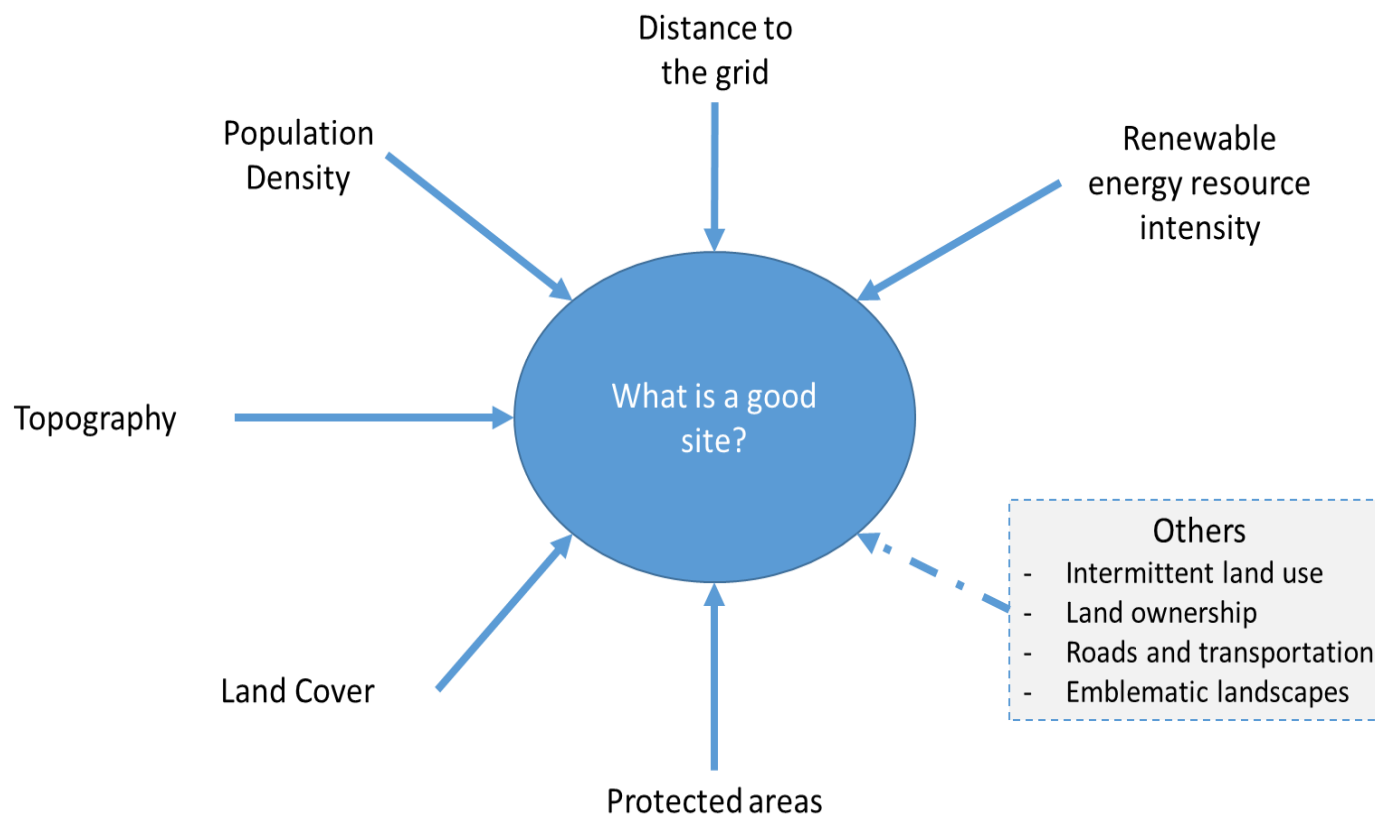


INVESTMENT OPPORTUNITIES IN LATIN AMERICA

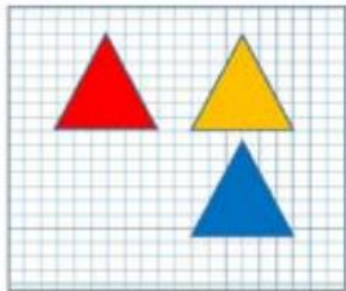
SUITABILITY MAPS FOR GRID-CONNECTED
AND OFF-GRID SOLAR AND WIND PROJECTS



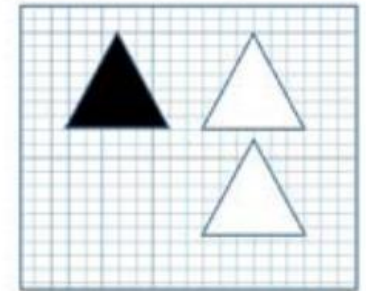
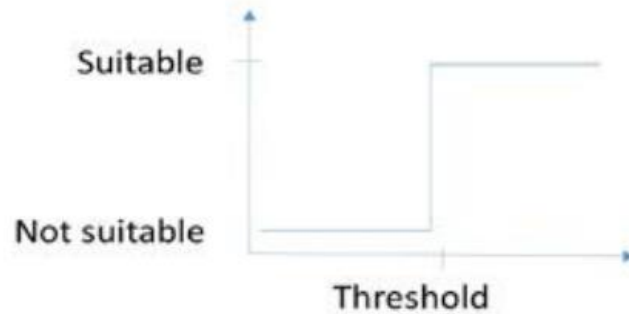
It will depend on the context!



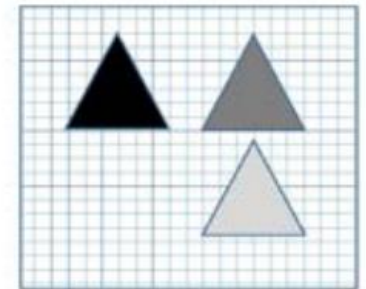
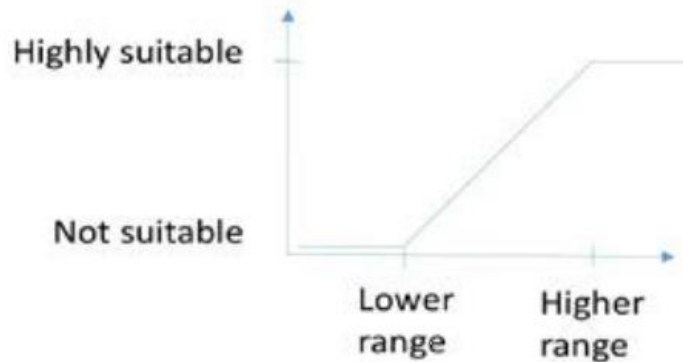
How to find the perfect spot? Decision making – exclusion vs suitability



- High
- Medium
- Low

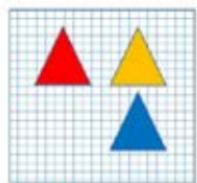


- Suitable
- Not suitable

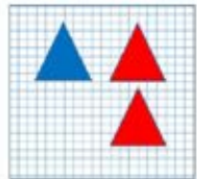
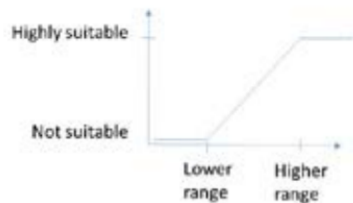


- Highly suitable
- Average suitability
- Low suitability

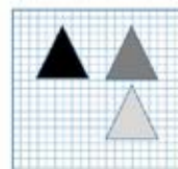
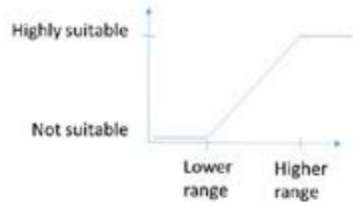
How to find the perfect spot – 2 parameters



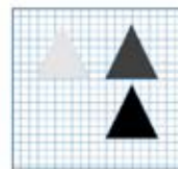
High
Medium
Low



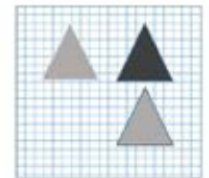
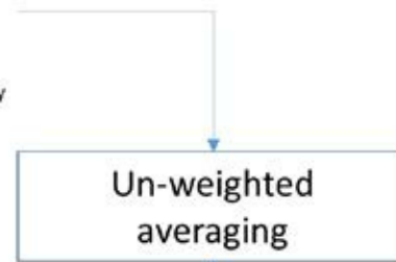
High
Medium
Low



Highly suitable
Average suitability
Low suitability



Highly suitable
Average suitability
Low suitability



Highly suitable
Average suitability
Low suitability

Wind parameters

Dimension	Min score (0%) at	Max score (100%) at
Wind speed at 100 m (m/s)	4.5	7 and more
Grid distance - centralised (km)	75, 100 and 150	0
Population density - centralised (persons/km ²)	500	0
Slope (%)	20	0
Land cover (exclusion)	Forests + water bodies and water bodies only	Other categories
Protected areas (exclusion)	0 for protected areas	1 outside
Altitude (exclusion)	0 above 2000 m above sea level	1 below 2000 m above sea level

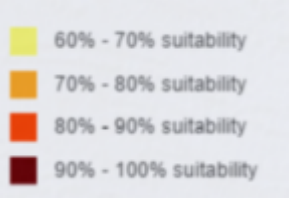
Dimension	Min score (0%) at	Max score (100%) at
Wind speed at 100 m (m/s)	4.5	7 and more
Grid distance - decentralised (km)	0	75, 100 and 150 and max above those distances
Population density - decentralised (persons/km ²)	0	Maximum above 0
Slope (%)	20	0
Land cover (exclusion)	Forests + water bodies and water bodies only	Other categories
Protected areas (exclusion)	0 for protected areas	1 outside
Altitude (exclusion)	0 above 2000 m above sea level	1 below

Solar parameters

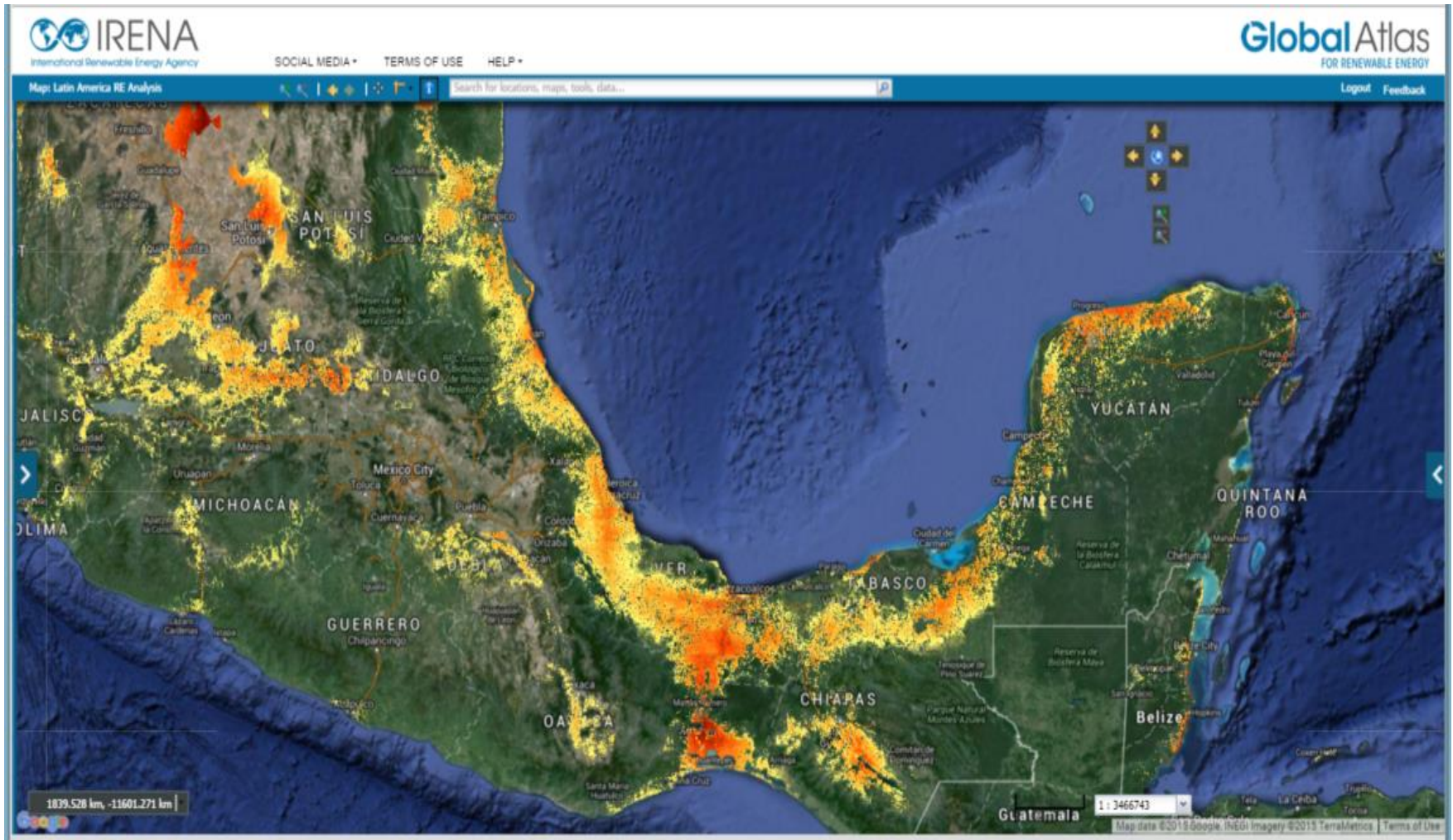
Dimension	Min score (0%) at	Max score (100%) at
Yearly global irradiation (kWh/m ²)	1500	2100 and more
Grid distance – centralised (km)	75, 100 and 150	0
Population density – centralised (persons/km ²)	500	0
Slope (%)	35	0
Land cover (exclusion)	Forests + water bodies and water bodies only	Other categories
Protected areas (exclusion)	0 for protected areas	1 outside

Dimension	Min score (0%) at	Max score (100%) at
Yearly global irradiation (kWh/m ²)	1500	2100 and more
Grid distance – decentralised (km)	0	75, 100 and 150 km and maximum above those distances
Population density – decentralised (persons/km ²)	0	Maximum above 0
Slope (%)	35	0
Land cover (exclusion)	Forests + water bodies and water bodies only	Other categories
Protected areas (exclusion)	N/A	1 outside

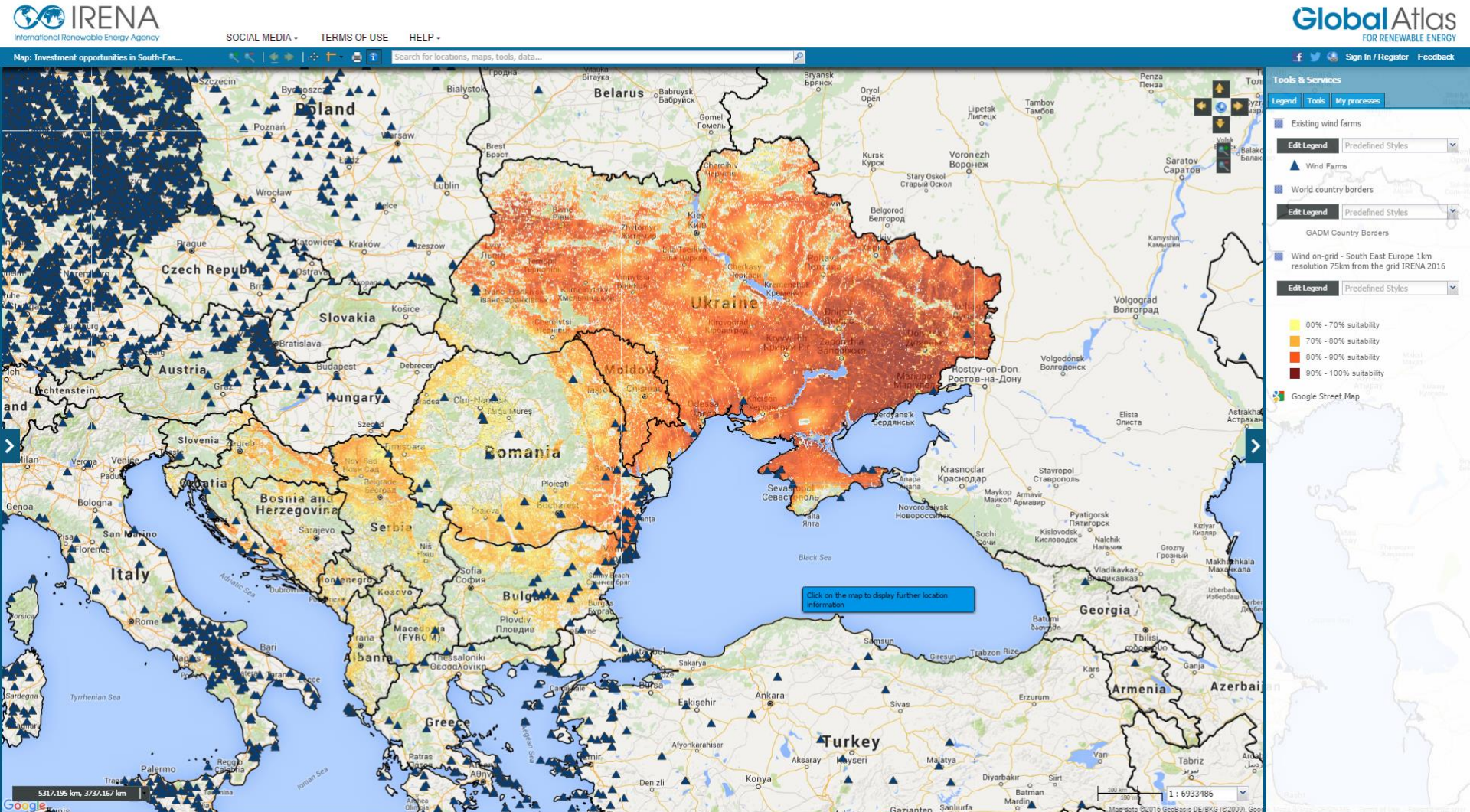
Dealing with complexity to help decision making



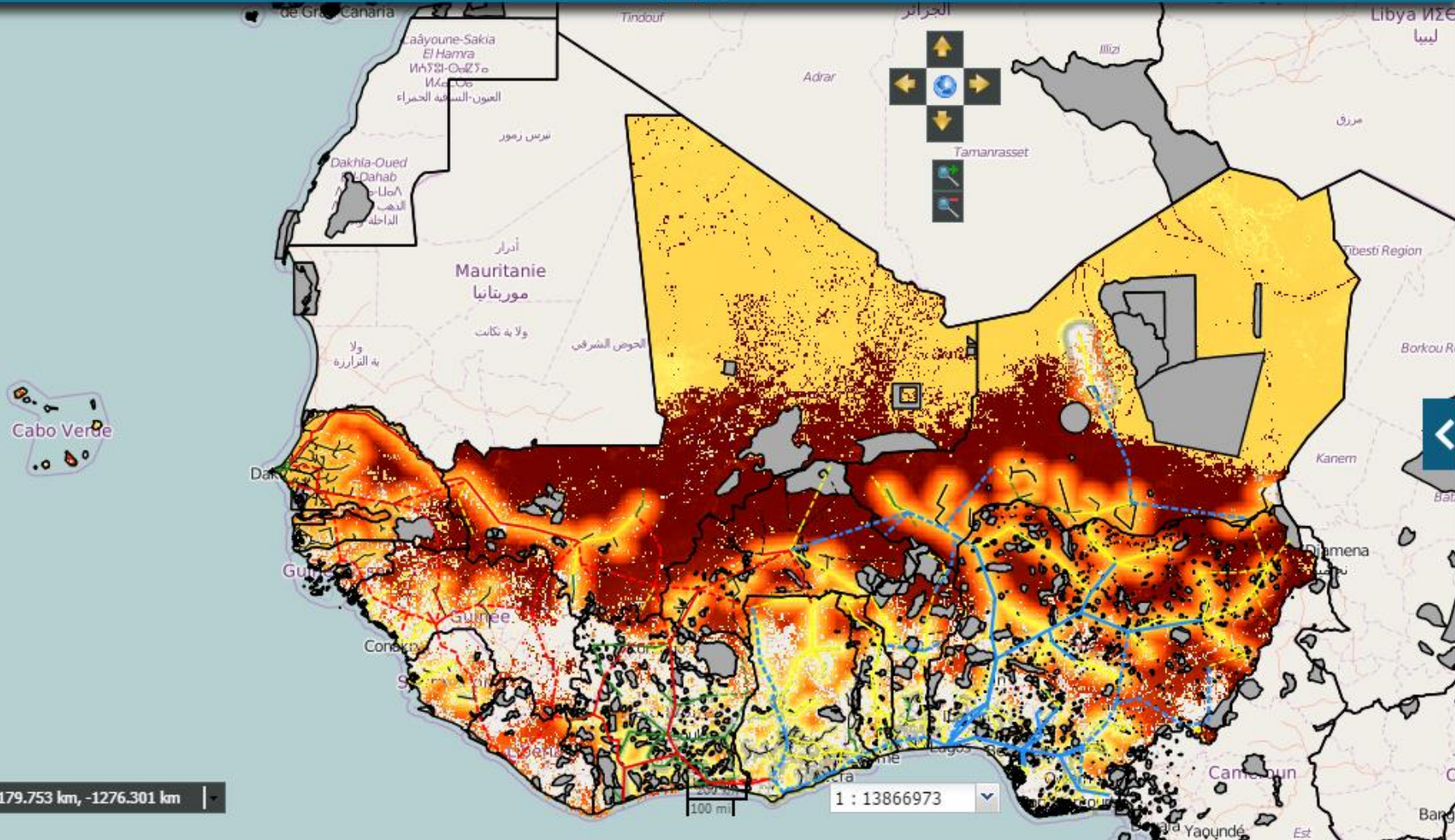
Example for wind



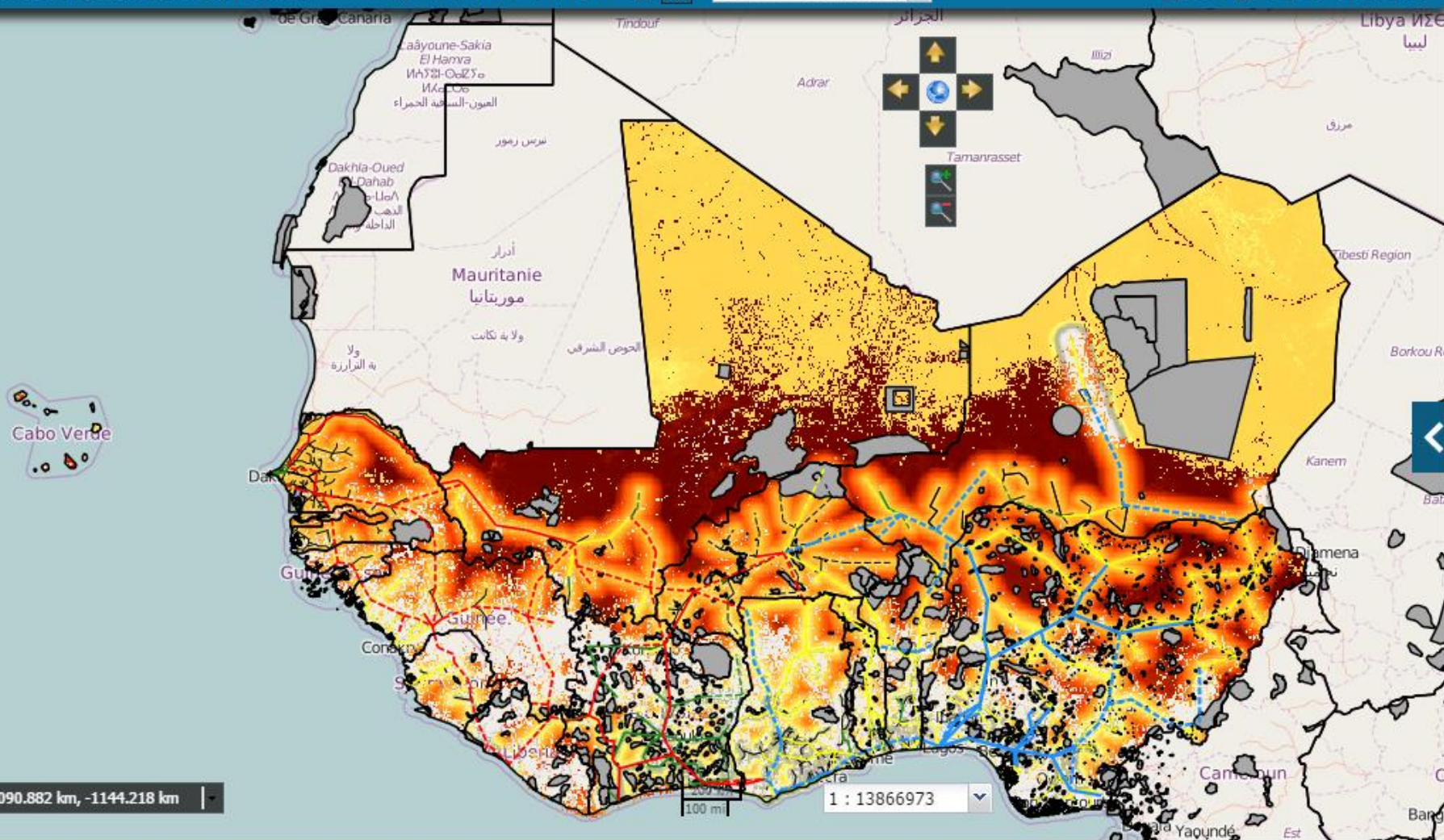
Example for wind



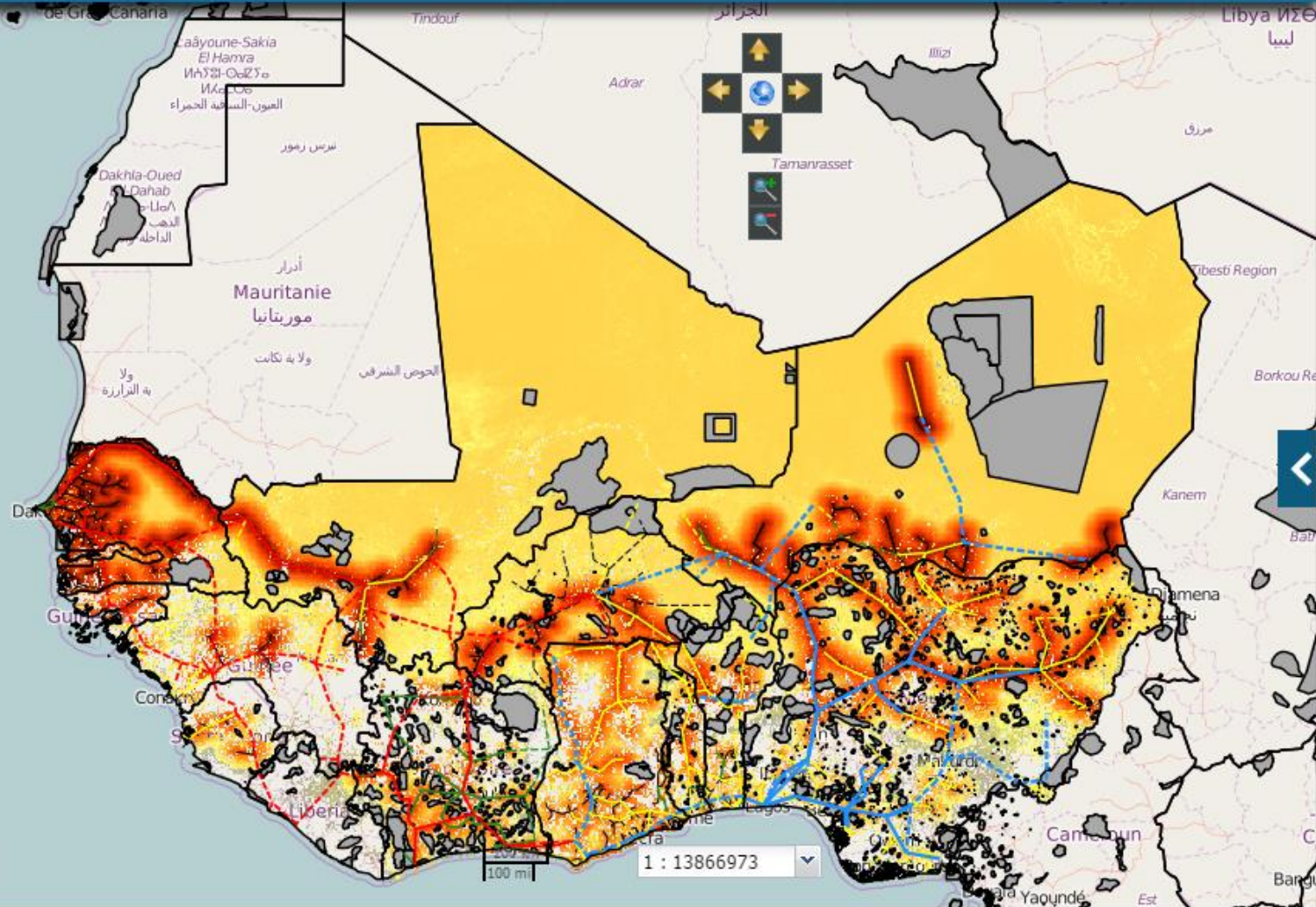
Solar Off-grid (existing grids)



Solar Off-grid (existing + planned grids)



Solar On-grid (existing grids)

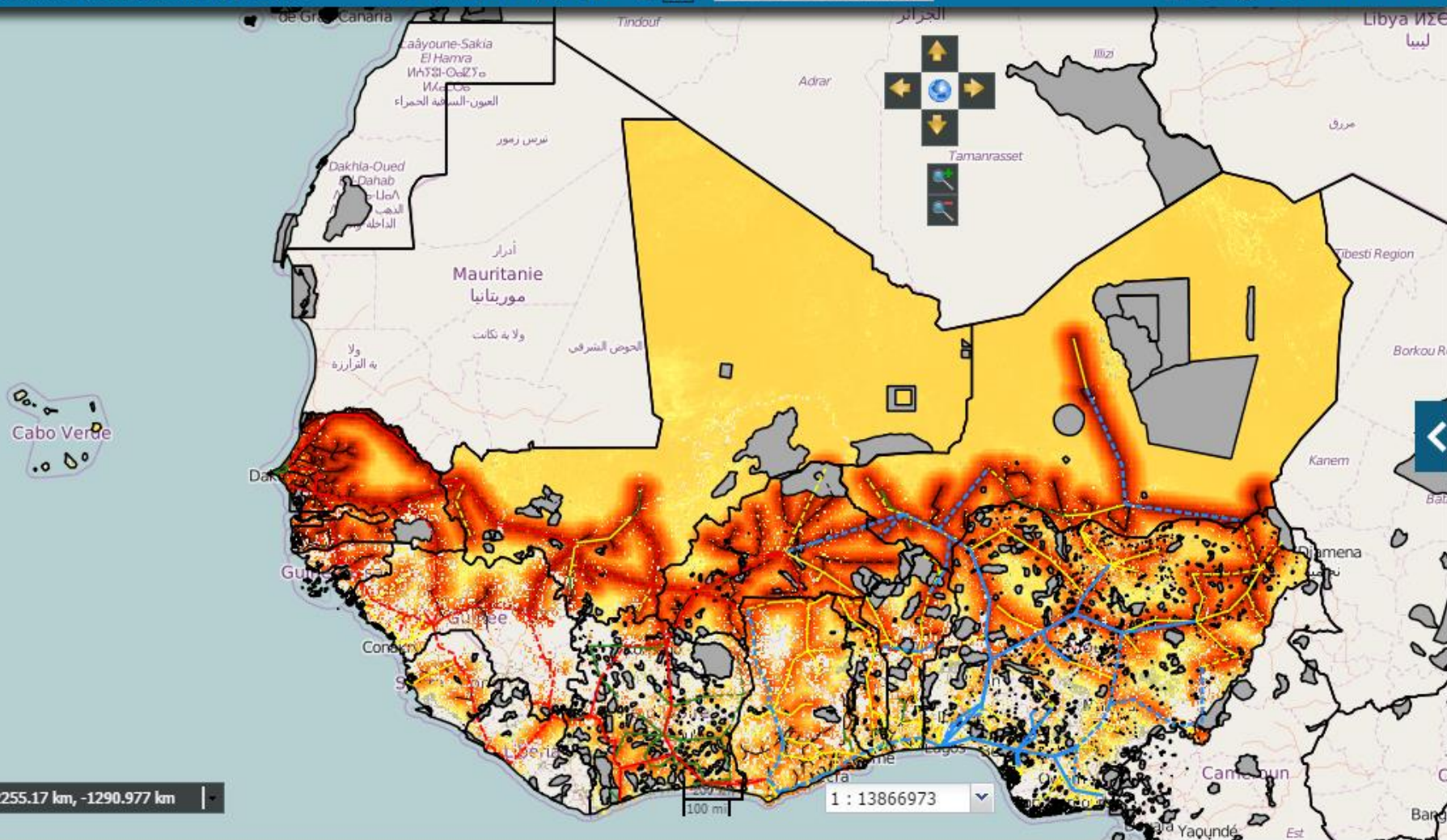


Solar On-grid (existing + planned grids)

Map: Investment Opportunities in the ECOWA...

Search for locations, ma

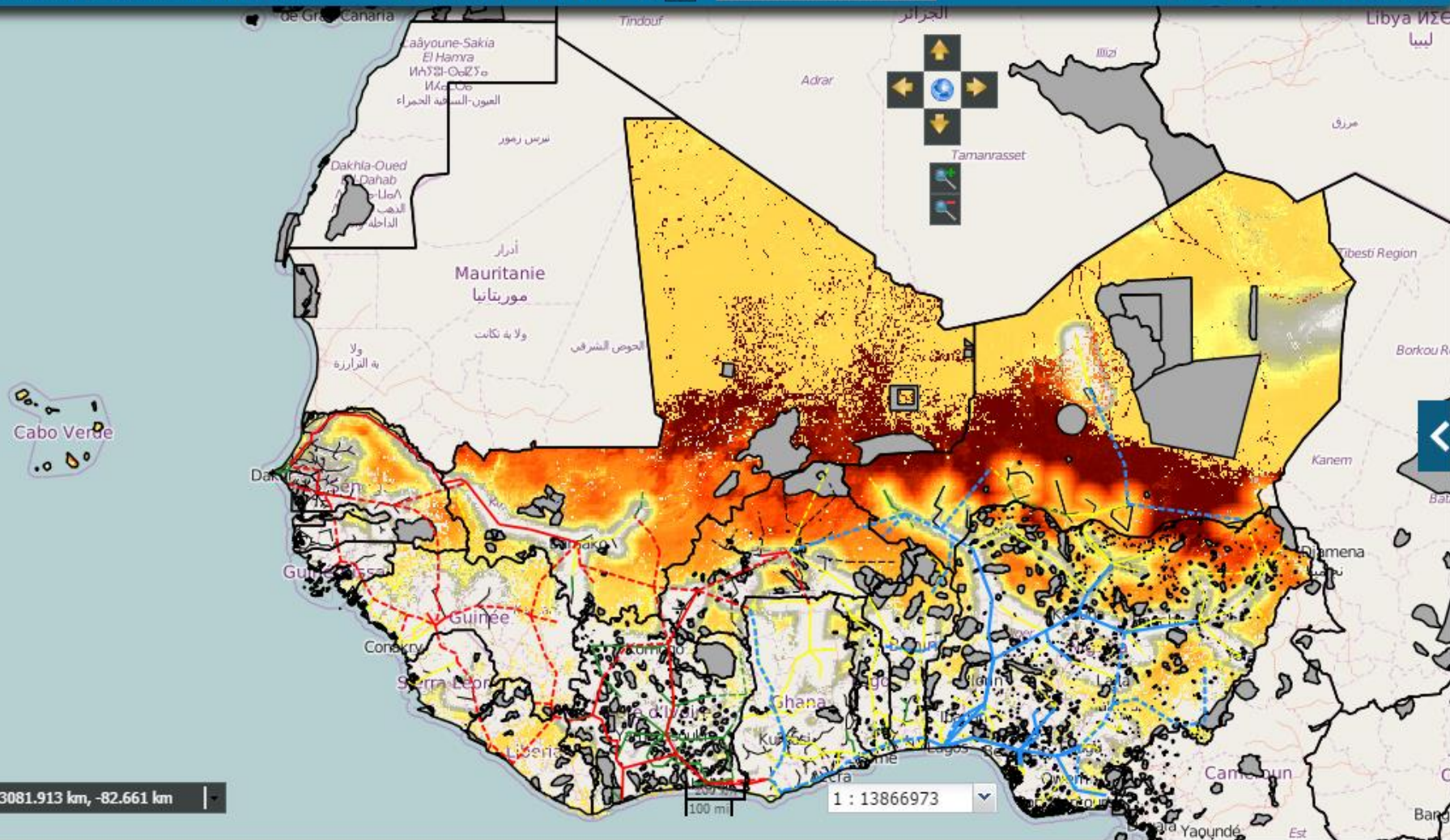
Logout Feedback



2255.17 km, -1290.977 km

1 : 13866973

Wind Off-grid (existing grids)

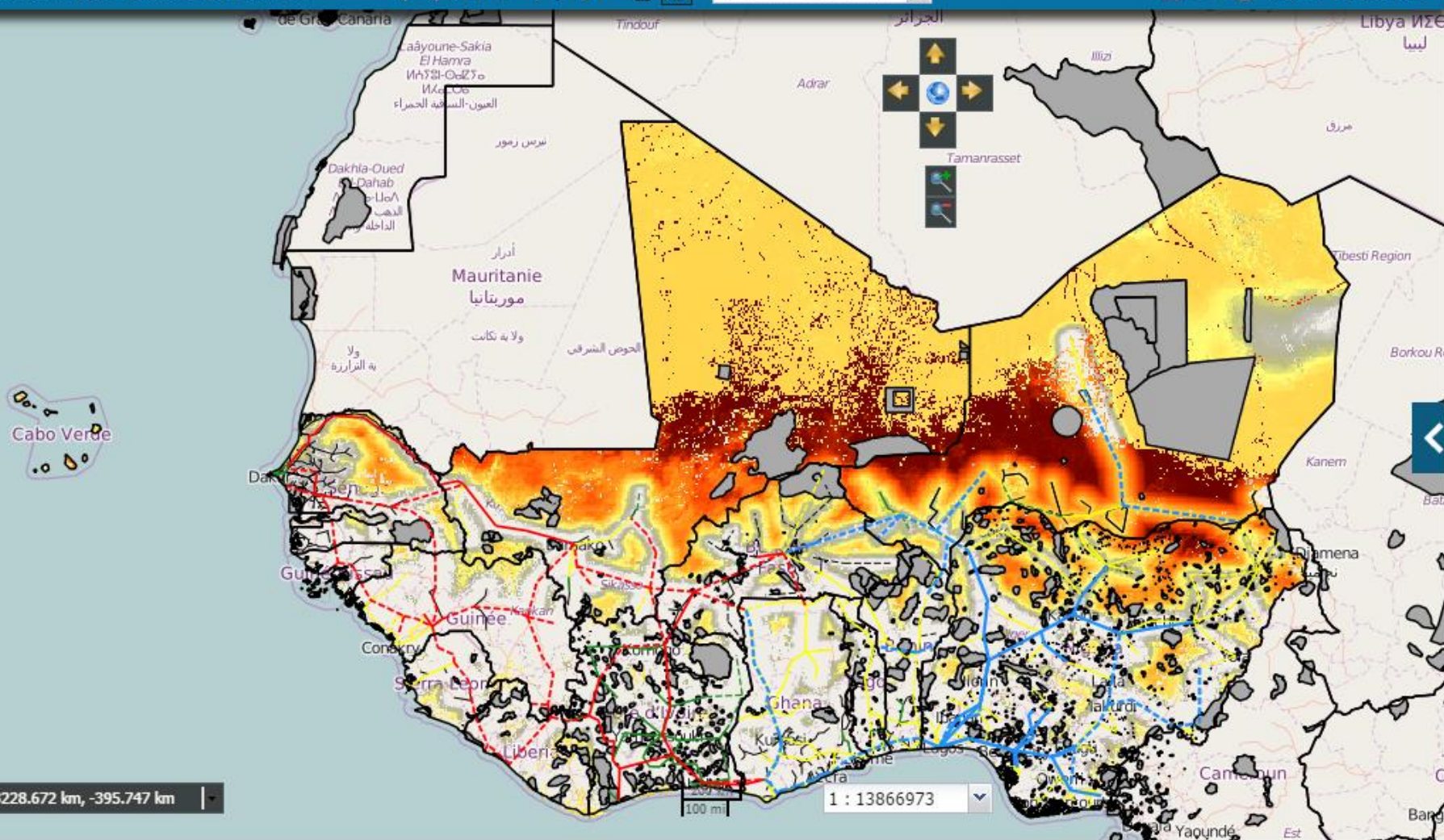


Wind Off-grid (existing + planned grids)

Map: Investment Opportunities in the ECOWA...

Search for locations, ma

Logout Feedback

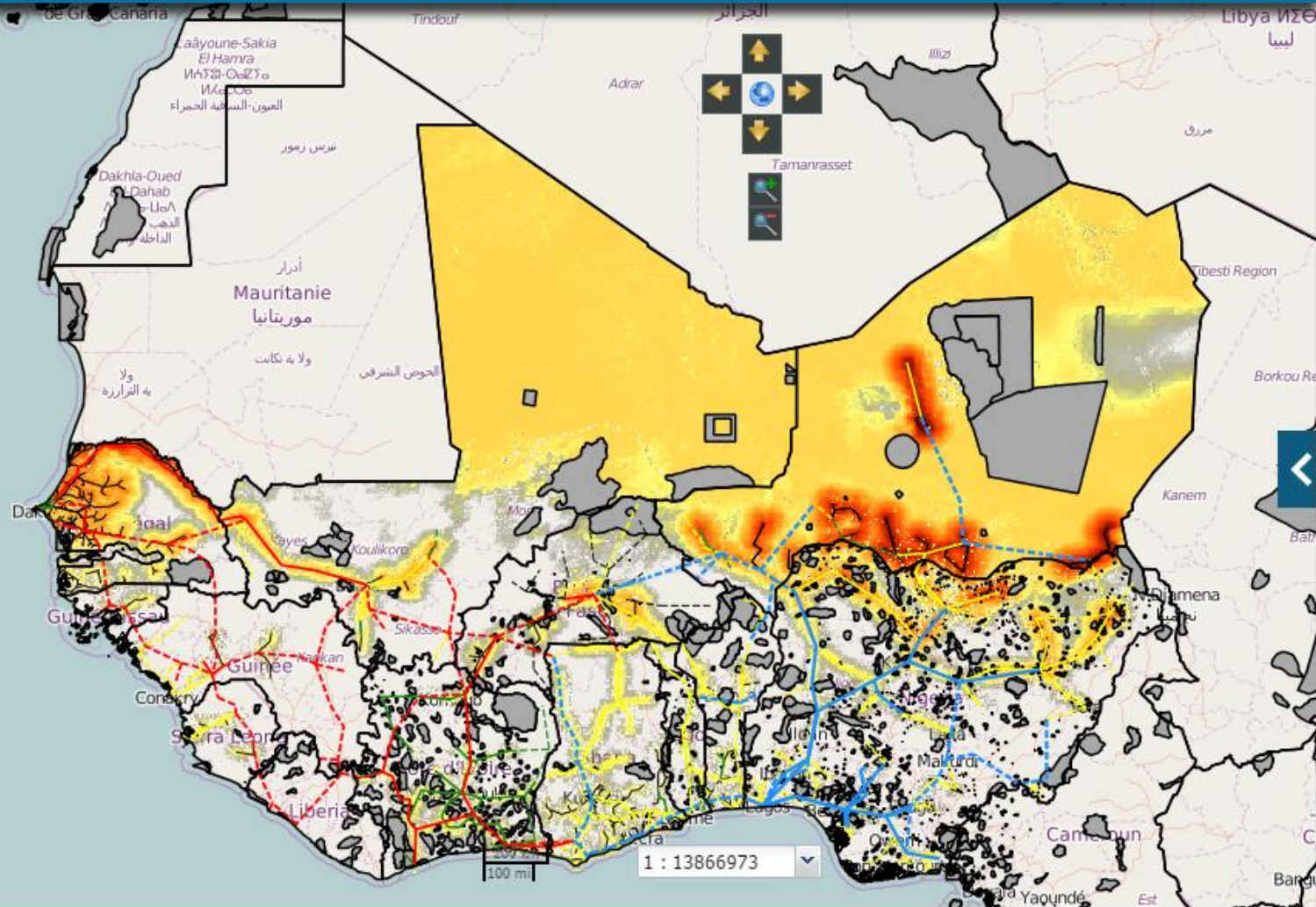


Wind On-grid (existing grids)

Map: Investment Opportunities in the ECOWA...

Search for locations, ma

Logout Feedback



3258.024 km, -483.802 km

1 : 13866973

Wind On-grid (existing + planned grids)

Map: Investment Opportunities in the ECOWA...

Search for locations, ma

Logout Feedback

