

IRENA

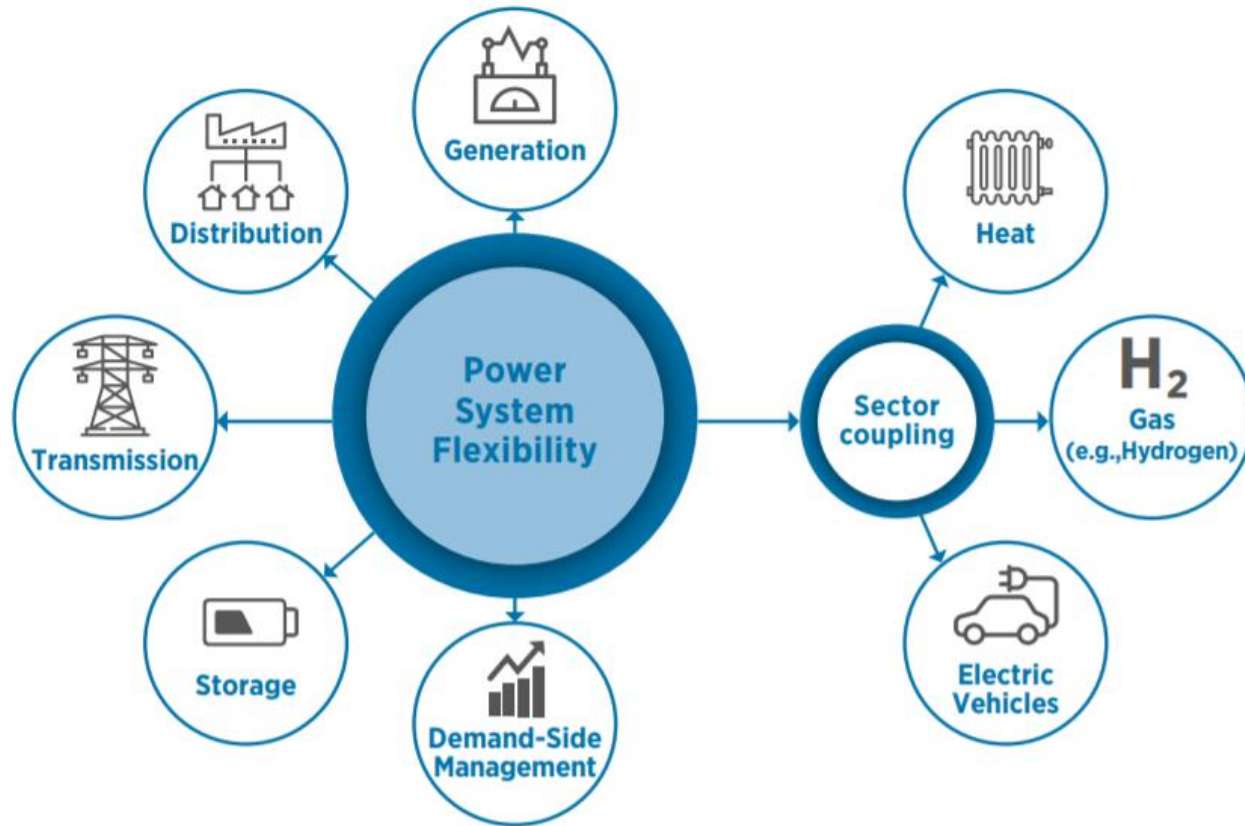
FlexTool

TRAINING FOR MENA

**SESSION 4: Modelling flexibility options  
from supply to demand-side flexibility**

# Flexibility options according to IRENA

# Flexibility needs to be harnessed in all sectors of the energy system



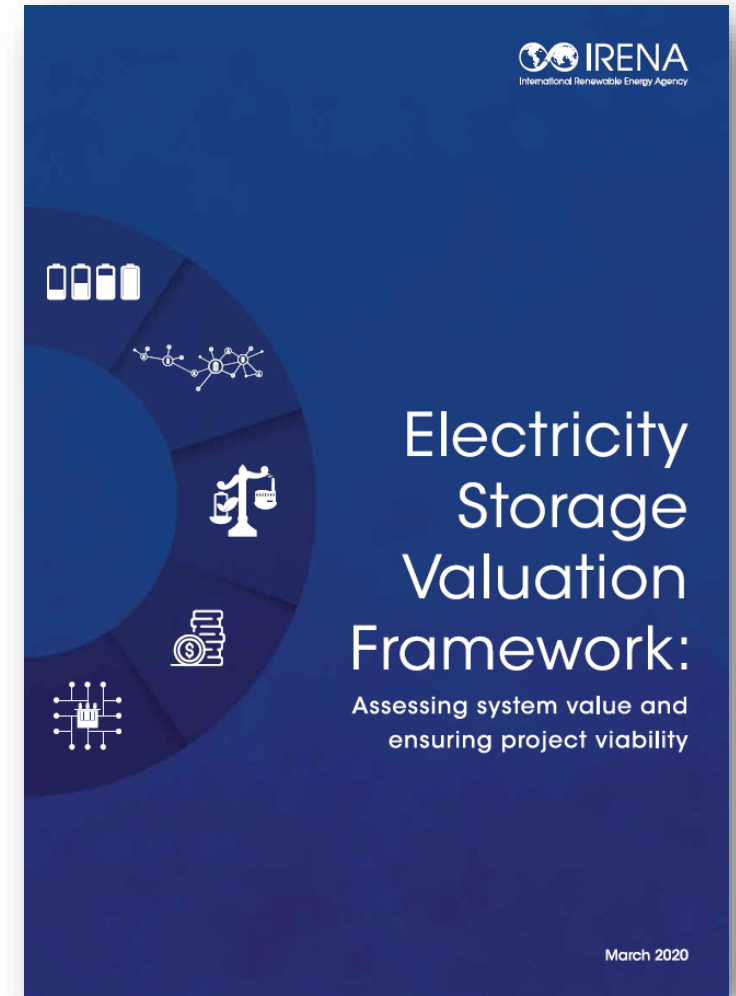
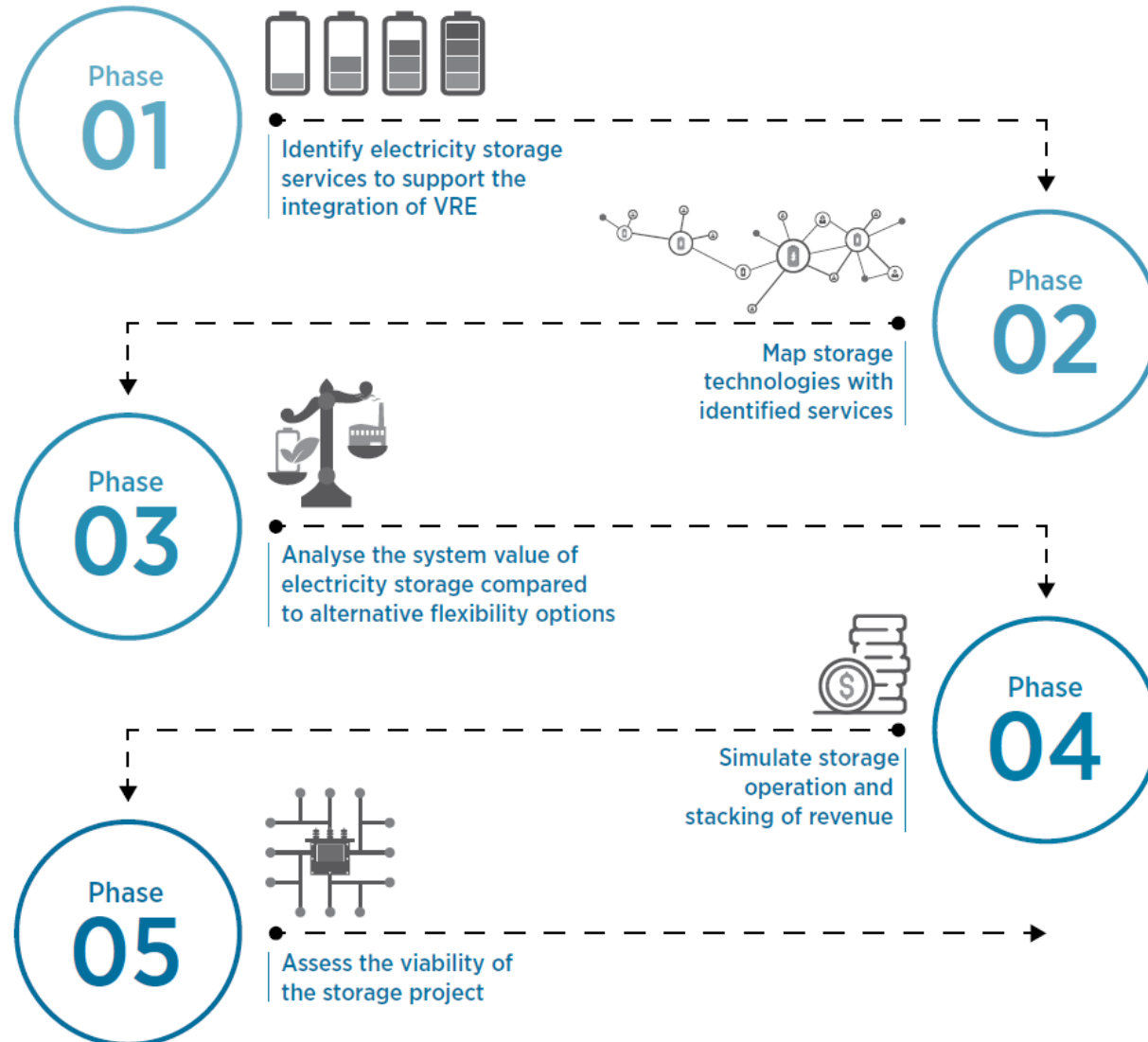
## POWER SYSTEM FLEXIBILITY FOR THE ENERGY TRANSITION

PART 1:  
OVERVIEW FOR POLICY MAKERS



# Electricity Storage

# Electricity Storage Valuation Framework



- Electricity storage is defined in “**unit\_type**” sheet, with few additions compared to other generators:
  - Efficiency (%) – Discharging efficiency
  - Eff.charge (%) – Charging efficiency
  - Self discharge loss (% of content per hour) – if any
- In “**units**” sheet the following is defined:
  - Capacity (MW) – Installed capacity in MW
  - Storage (MWh) – Maximum storage capacity in MWh
  - Storage start/finish – Initial and final state of the storage
- If storage type is pumped hydro storage it is possible that the unit has a natural inflow, which could be defined in “**ts\_inflow**” sheet



# Investment mode for batteries

## Two options: Fixed P/E ratio or free optimisation

### Option 1: Fix power to energy ratio

- Model the batteries with a fixed power to energy ration, this is to say, with a fixed discharge duration (*e.g.*, 2 hours or 4 hours batteries)
- **Only investment cost required is the one to invest in energy (battery cells)**
- In this example the model would only consider 1 hour duration batteries in optimisation

unit type	inv.cost/kW	inv.cost/kWh	fixed kW/kWh ratio
battery		80	1.000

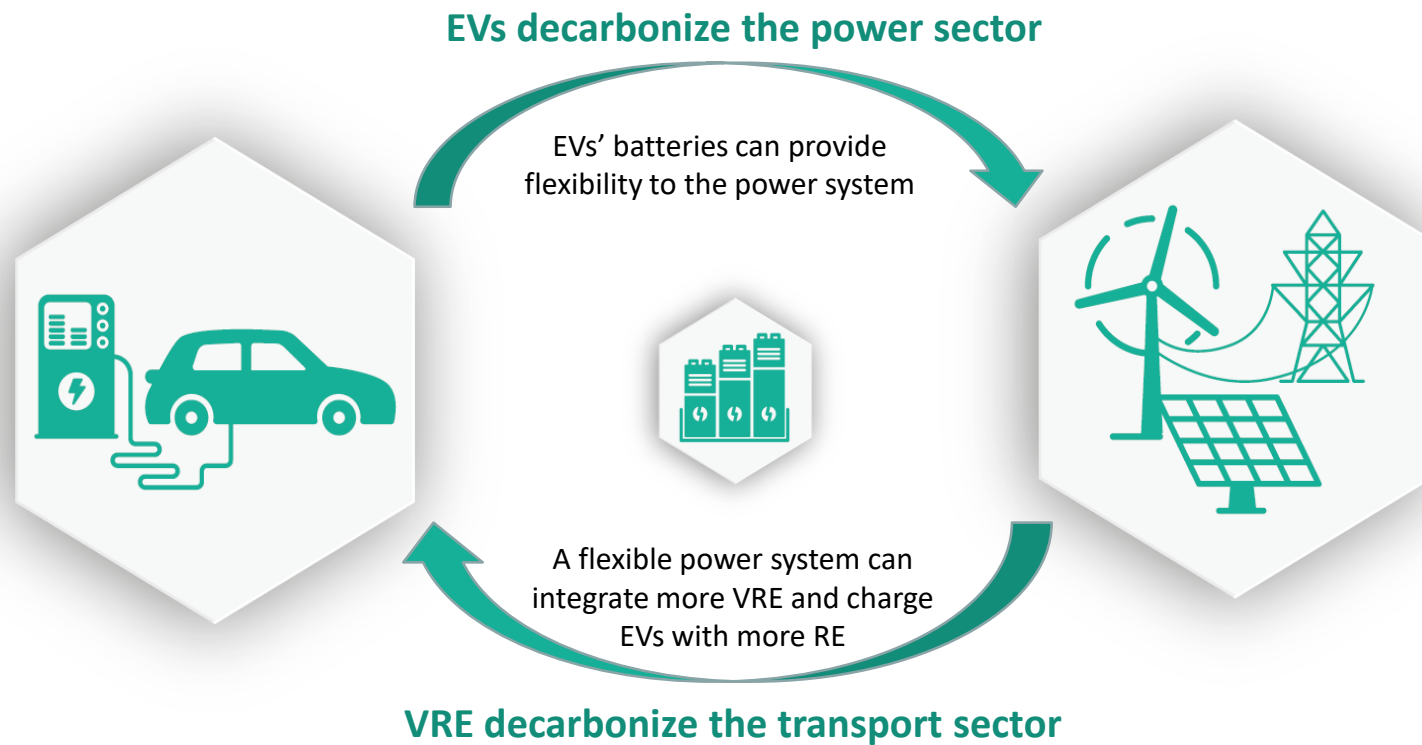
### Option 2: Free optimisation of power and energy

- It is also possible to optimise separately power and energy
- In this case there is no need to defined a P/E ratio but an investment cost for power (inverter) and energy would be required

unit type	inv.cost/kW	inv.cost/kWh	fixed kW/kWh ratio
battery	20	80	

# Electric Vehicles





**Smart charging is key to take advantage of the synergies between clean transport and low carbon electricity**



# Modelling unidirectional charging of EVs

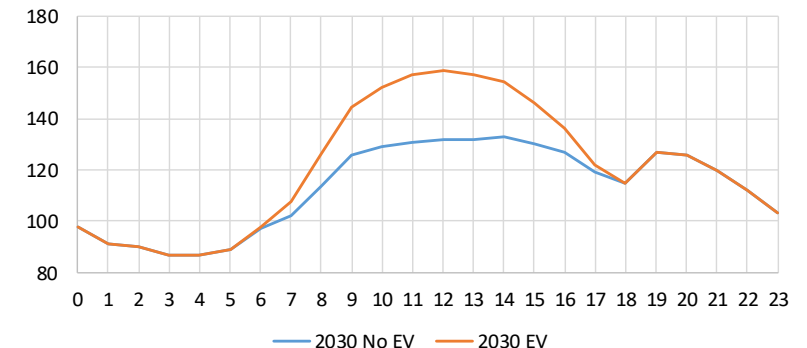
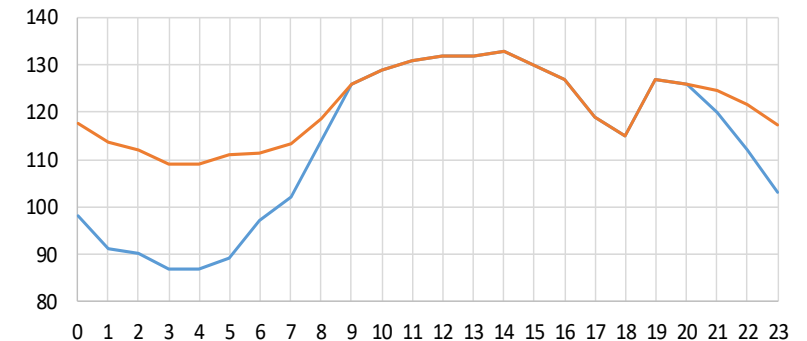
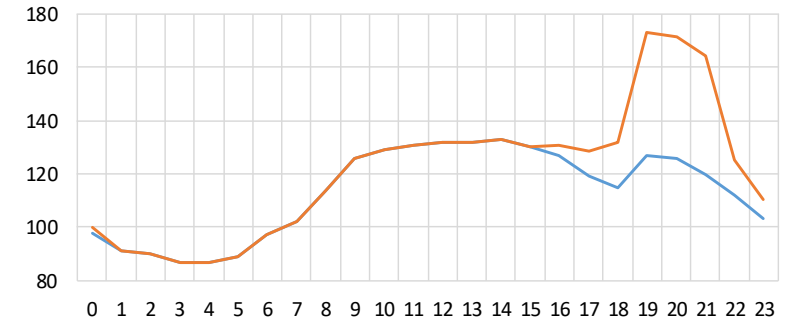
## Pre-calculating demand profiles

- EVs as predefined demand profiles that are added on top of the original demand curve

- Three charging scenarios:

- 1 Evening uncontrolled charging
  - As soon as EVs arrive home, they charge at maximum power
- 2 Night controlled charging
  - Charge is distributed along the night
- 3 Day controlled charging
  - Charge coincides with the solar PV profile

- In FlexTool:** Sum these profiles to the demand curve and add it in “**ts\_energy**” sheet

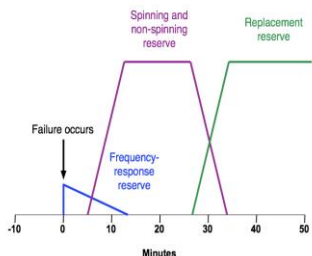


## Electromobility Grid



Demand

- Defined demand profile in “ts\_energy” sheet
- This demand would represent discharge of battery because of mobility
- We need to estimate this demand
- Define reserve profile in “ts\_reserve” sheet
- This is used to represent the amount of EVs that are connected to grid in a time period
- Existing software to estimate this



Reserves

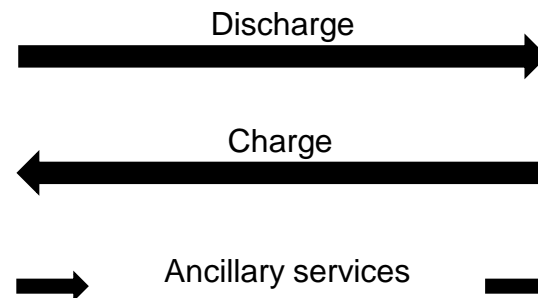
Define a unit that transfers energy from mobility grid to electricity grid and vice versa



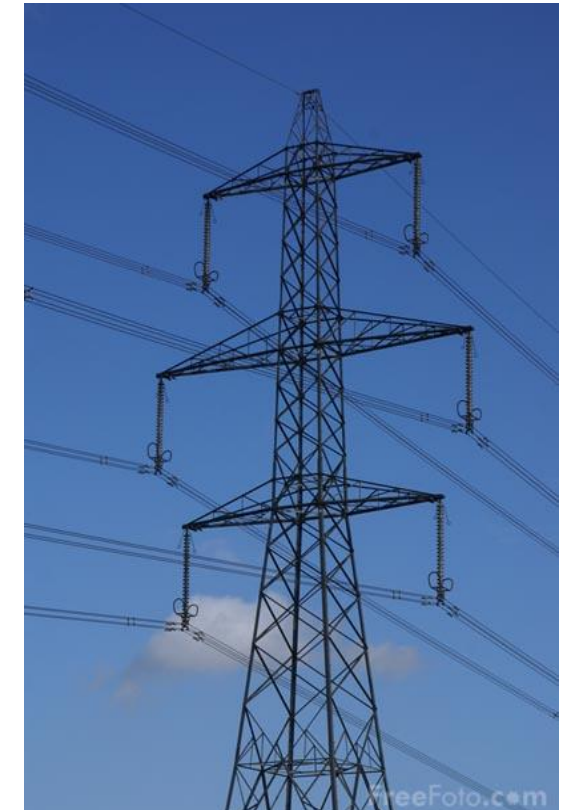
$$P_{tot} = \alpha * \sum P_{chargers}$$

$$E_{tot} = \alpha * \sum E_{battery}$$

$\alpha = \text{Simultaneity factor}$

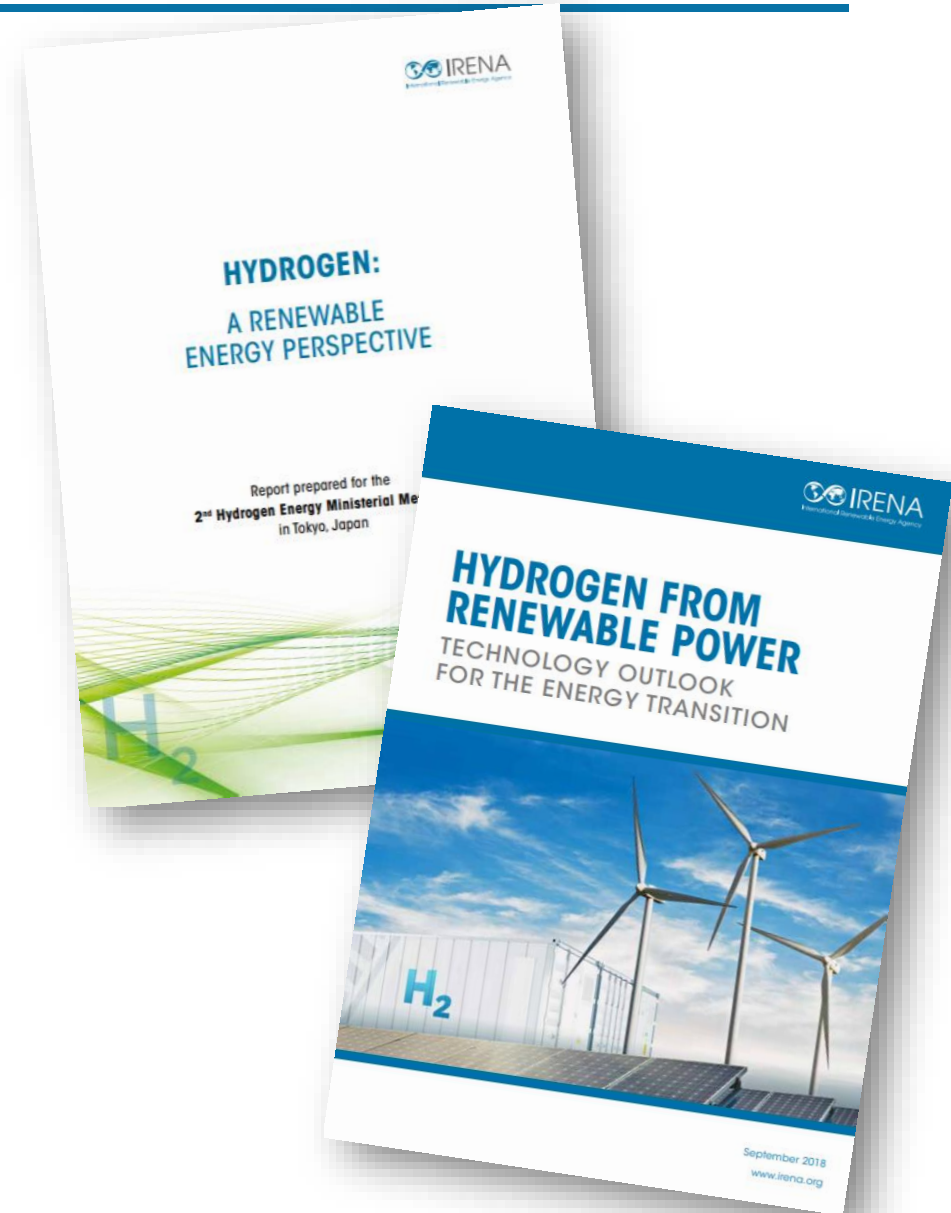
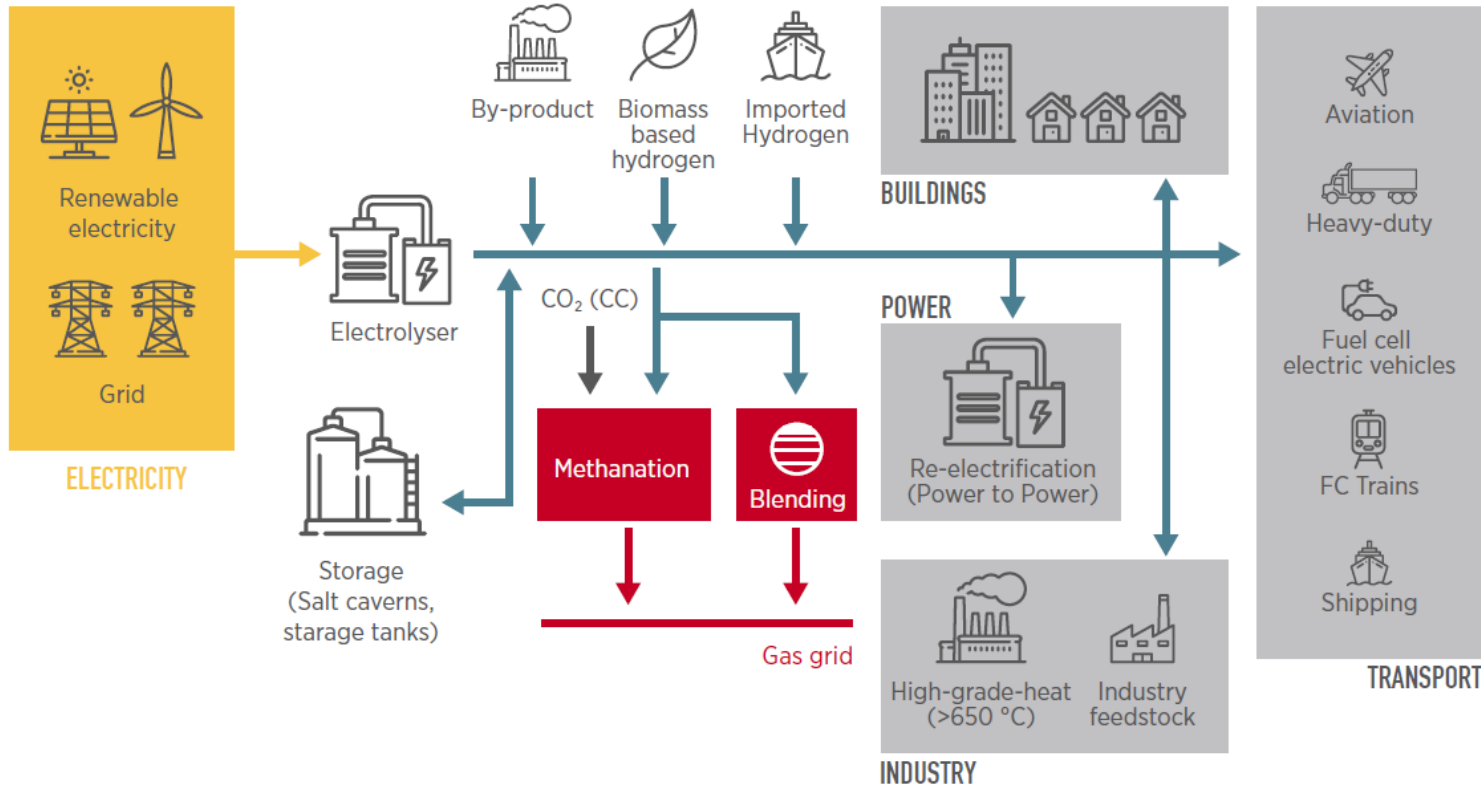


## Electricity Grid



# Power-to-hydrogen

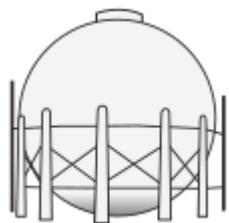
# Green hydrogen for the energy transition



## Hydrogen Grid

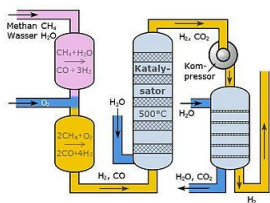


- Defined demand profile in “ts\_energy” sheet
- This demand would represent hydrogen demand in the system



Hydrogen Storage

- Defined exactly the same as electricity storage but in hydrogen grid (see slides on electricity storage)
- In FlexTool a hydrogen network with different nodes could also be modelled



Other production methods

- In hydrogen grid other methods of hydrogen production can also be modelled in a simplified way
- Examples: steam methane reforming (SMR)

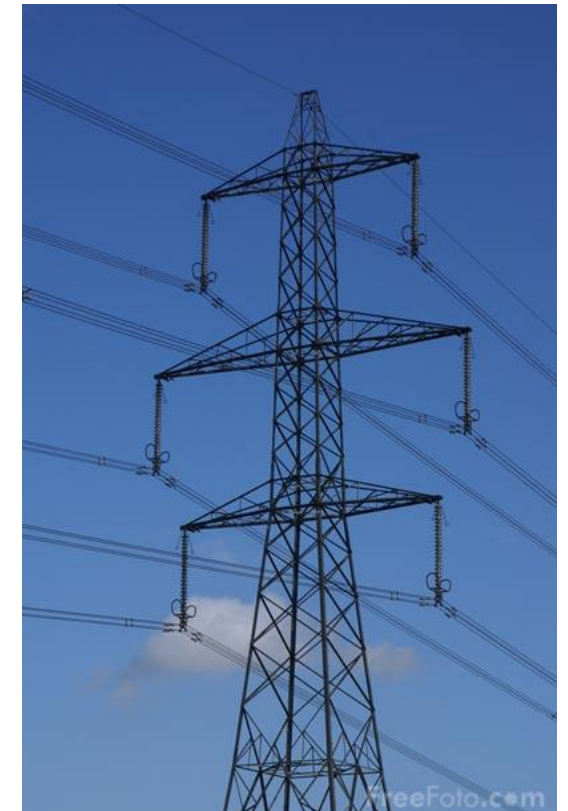
Electrolyser  
(NEXT SLIDE)



Fuel Cell  
(NEXT SLIDE)



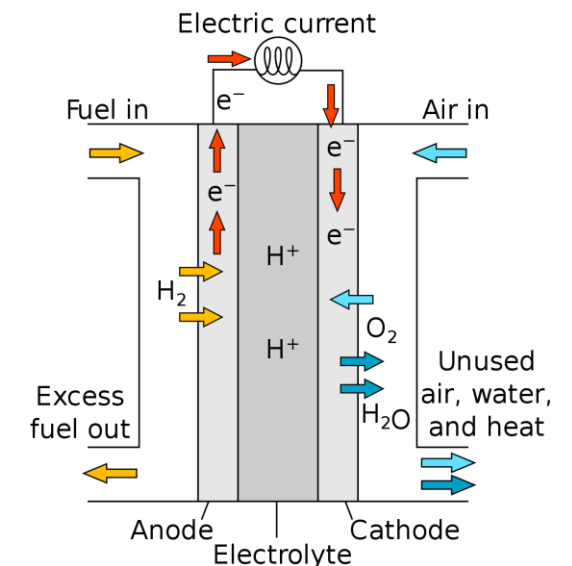
## Electricity Grid





- Unit that absorbs electricity and converts it to hydrogen to be used in that grid
- In “**unit\_type**” define the main characteristics of the electrolyser depending on its chemistry
  - For example: efficiency (“**conversion eff.**”), ramping capabilities, lifetime, etc.
- In “**units**” define installed capacity per node as with generators
- Main issue with electrolysers today is lack of real data about their characteristics

- Unit that absorbs hydrogen and converts it back to electricity
- In “**unit\_type**” define main characteristics of the fuel cell. Note that efficiency is also “**conversion eff.**”
- In “**units**” define installed capacity per node as with generators
- Likewise we can model a gas turbine or any other generator that uses hydrogen as an input



# Transmission

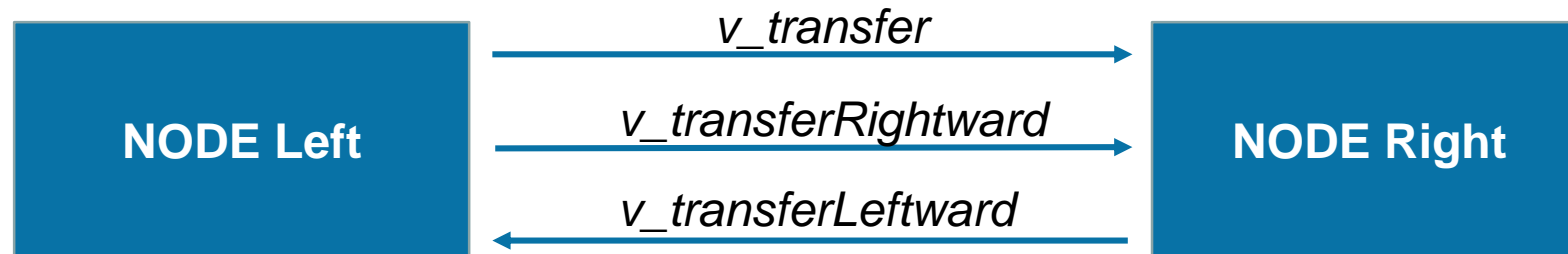


- **Transfers** between nodes are defined in “**nodeNode sheet**”
  - Both nodes have to be from the same grid
  - Existing transfer links can have different capacity to different direction
  - Future investments will always have equal capacity to both directions

	A	B	C	D	E	F	G	H	I	J	K	L	M	N
1	grid	node1	node2	cap.rightward (MW)	cap.leftward (MW)	invested capacity (MW)	max invest (MW)	loss	inv.cost/kW	lifetime	interest	annuity	HVDC	color in results
2	elec	nodeA	nodeB	150	150		0	0.01	100	50	0.08	0.082	0	
3	elec	nodeB	nodeC	100	100		0	0.01	100	50	0.08	0.082	0	









**nodeNode sheet**

- **Transfer with losses** requires at least two variables
  - A linear equation with 'loss x transfer' would mean that in the other direction loss is actually a gain
- The loss can be used to make the **model 'leak'**
  - Instead of curtailing VRE, the model can dissipate energy by transferring in two directions at once
  - Can be controlled only with a binary variable (not allowed in FlexTool)
- Hence, **three variables**: transfer, transfer rightward and transfer leftward
  - Transfer does not contain loss
  - Transfer rightward allows losses and helps to limit the leakage
  - Transfer leftward helps to limit the leakage further

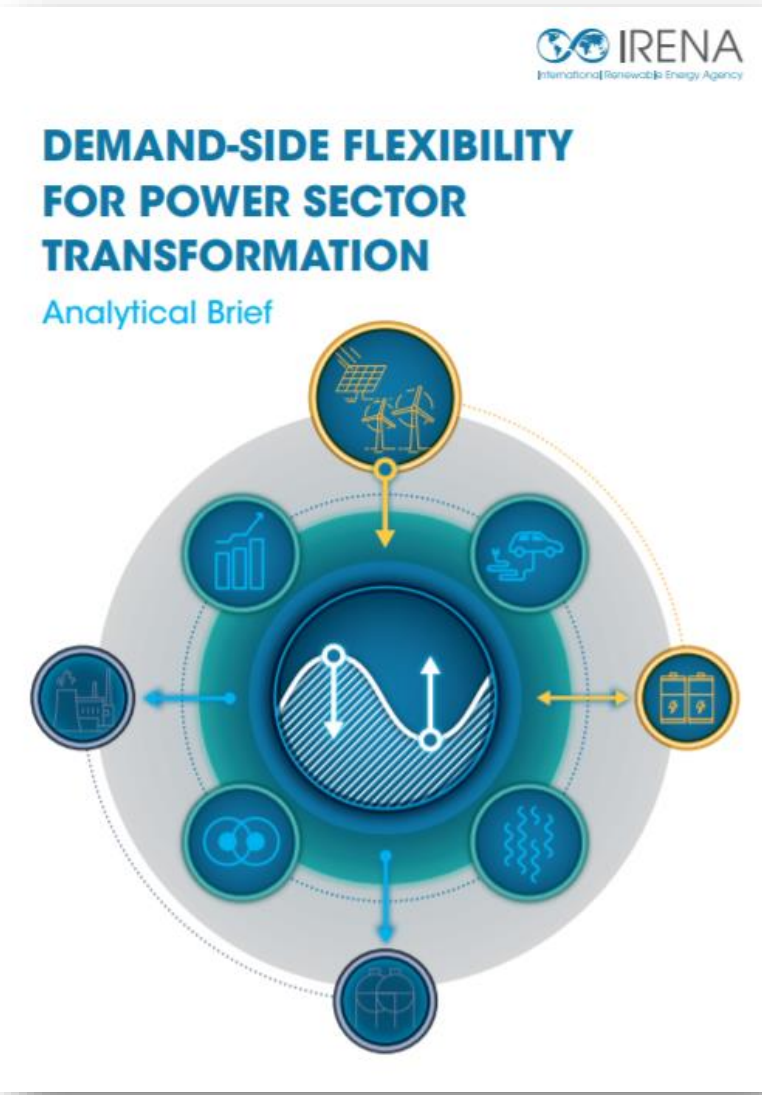


# Demand response

# Demand-side flexibility for power sector transformation

		 Industrial	 Commercial	 Residential
	Power-to-heat	●	●	●
	Power-to-hydrogen	●	●	●
	Electric vehicles	●	●	●
	Smart appliances	●	●	●
	Industrial processes	●	●	●

- The solution would be competitive/suitable in that end-use sector
- The solution is unlikely to be competitive/suitable in that end-use sector



# Modeling demand response in the IRENA FlexTool

- Demand response is defined in “**unit\_type**” sheet, as if it was a generator. Defined as:
  - **Demand response increase** – Generator with negative price and empty charging efficiency
  - **Demand response downwards** – Generator with positive price and efficiency



unit type	efficiency	min load	eff at min load	ramp up (p.u. per min)	ramp down (p.u. per min)	O&M cost/MWh	availability	max reserve	inertia constant (MW s/MW)	fixed cost/kW/year	inv.cost/kW	inv.cost/kWh	fixed kW/kWh ratio	conversion eff	startup cost	min uptime (h)	min downtime (h)	eff charge	self discharge loss	lifetime	interest	annuity	non synchronous
demand_incr				1.00	1.00	-15.0	1.00	1.00										1.00		10	0.08	0.149	0
demand_decr	1.00			1.00	1.00	100.0	1.00	1.00												10	0.08	0.149	0

- In “**units**” sheet the following is defined:
  - Capacity (MW) – If the demand response is an increase then negative maximum capacity and if it is to decrease then positive

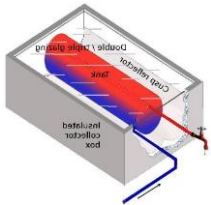
unitGroup	unit type	fuel	cf profile	inflow	input grid	input node	output grid	output node	capacity (MW)
Dem_inc	demand_incr						elec	nodeC	-30
Dem_dec	demand_decr						elec	nodeC	40

# Power-to-heat

## Heat Grid

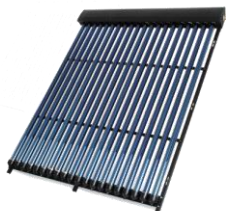


- Defined demand profile in “ts\_energy” sheet
- This demand would represent heat demand in system



- Defined exactly the same as electricity storage but in heat grid (see slides on electricity storage)
- Usually use the property: “self-discharge loss”

Thermal Storage



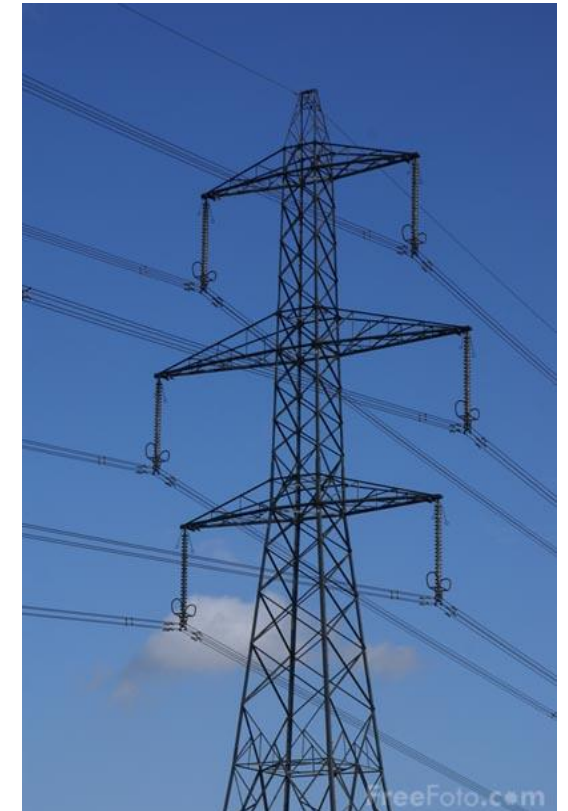
- Defined exactly the same as a generator but in heat grid (see slides on generators)
- Examples: solar thermal, gas boilers, etc.

Direct heat devices

Power-to-heat devices  
**(NEXT SLIDE)**



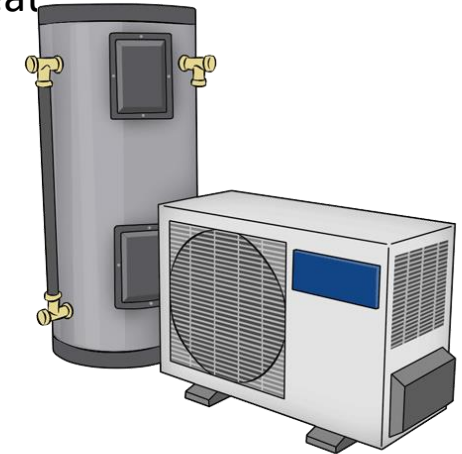
## Electricity Grid



# Power-to-heat devices in IRENA FlexTool

- Power-to-heat devices can be heat pumps or electric boilers that convert electricity to heat
- Defined similar to generators with some peculiarities:
  - Static efficiency – Defined directly in “unit\_type” sheet as “conversion\_eff”

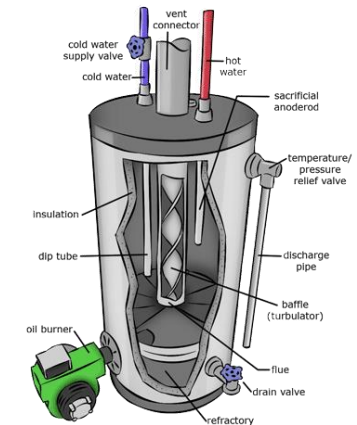
unit_type	efficiency	min load	eff at min load	ramp up (p.u. per min)	ramp down (p.u. per min)	O&M cost/MW h	availability	max reserve	inertia constant (MW_s/MW)	fixed cost/kW/year	inv. cost/kW	inv. cost/kW h	fixed kW/kW h ratio	conversion_eff	startup cost	min uptime (h)	min downtime (h)	eff charge	self discharge loss	lifetime	interest	annuity	non synchronous
heat_pump				1.00	1.00	1.00	0.50			1000				2.50						40	0.08	0.084	1



- Dynamic efficiency – Activate option in “units” sheet and then define it in “ts\_unit” sheet

use efficiency time series	fix unit generation	use_min_generation	use_max_generation	use_min_online	inflow multiplier
1		1	1		

Time	grid	heat
	node	heatA
unit	unit	heat_pump
unit_ts_param	unit_ts_param	efficiency
t0000		2.50
t0001		2.60
t0002		2.70
t0003		2.80
t0004		2.90
t0005		3.00



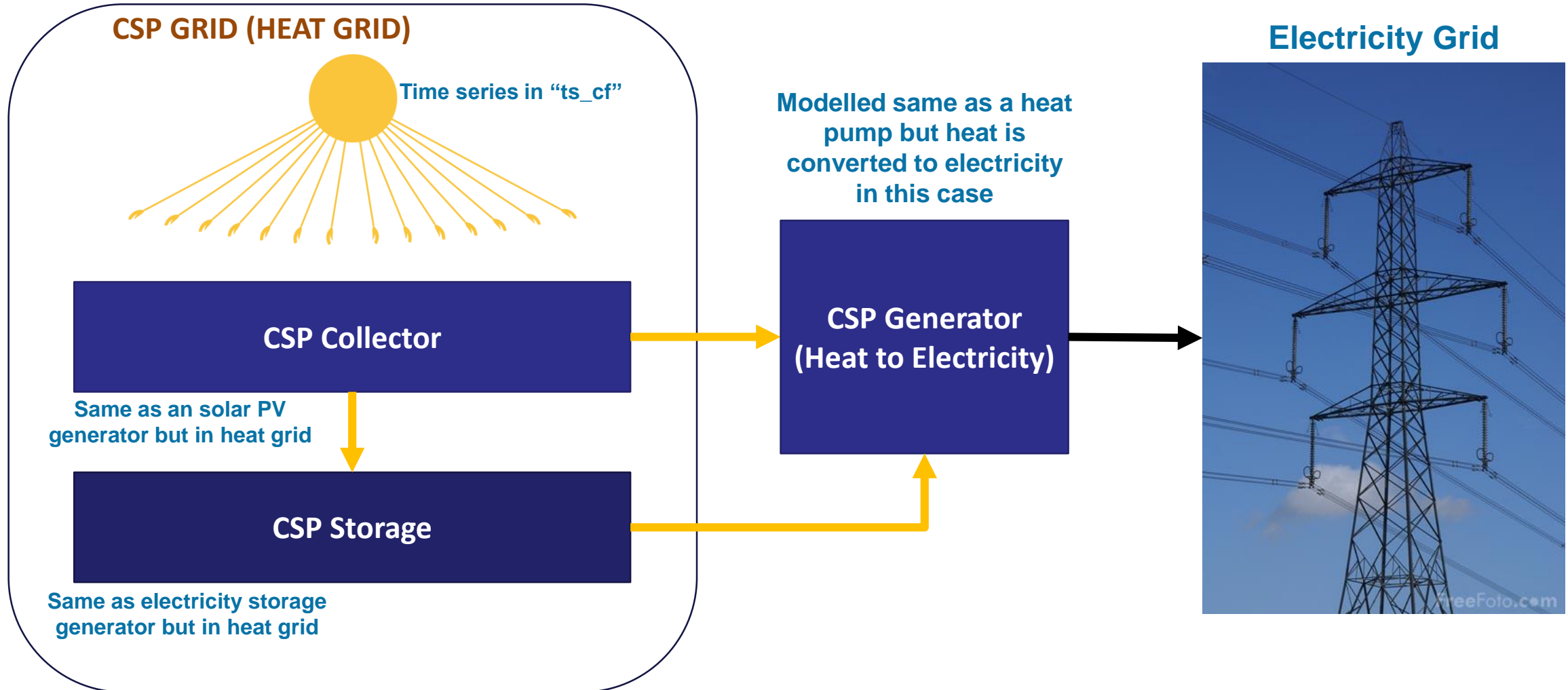
- **IMPORTANT:** Define electricity as input grid and heat as output grid in the “units” sheet



# Concentrated Solar Power (CSP)

# Modelling CSP units in FlexTool

- » CSP is represented in the FlexTool as an additional single node grid with zero demand
- » The CSP grid is interconnected with electrical grid at a specific node





[www.irena.org](http://www.irena.org)



[www.twitter.com/irena](http://www.twitter.com/irena)



[www.facebook.com/irena.org](http://www.facebook.com/irena.org)



[www.instagram.com/irenaimages](http://www.instagram.com/irenaimages)



[www.flickr.com/photos/irenaimages](http://www.flickr.com/photos/irenaimages)



[www.youtube.com/user/irenaorg](http://www.youtube.com/user/irenaorg)