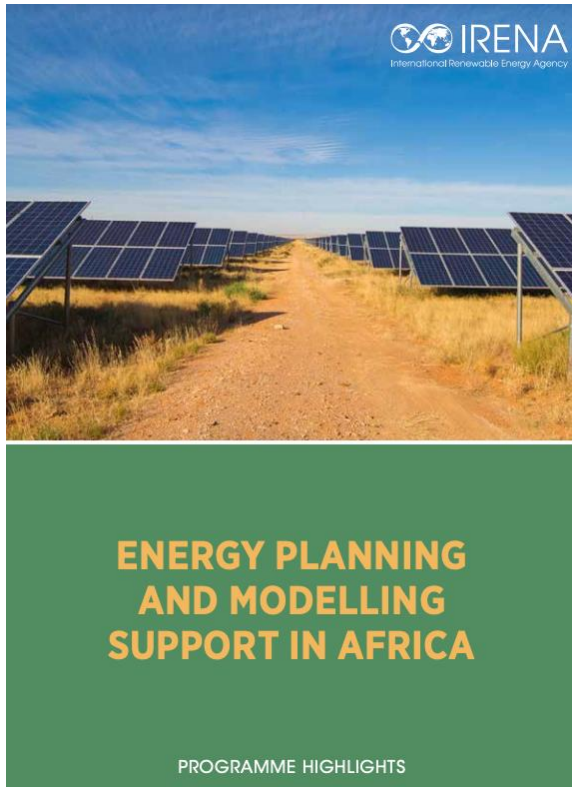


# IRENA's capacity building in energy modelling and planning



**Energy planning support team  
Innovation and Technology Centre, IRENA**

**29 November 2021**



## Basis for good planning

- Ownership of the skills and processes
- Transparent methodology
- Robust data

# Support countries to devise their own strategies

## National masterplan development support programme

E.g. Eswatini 18 month programme



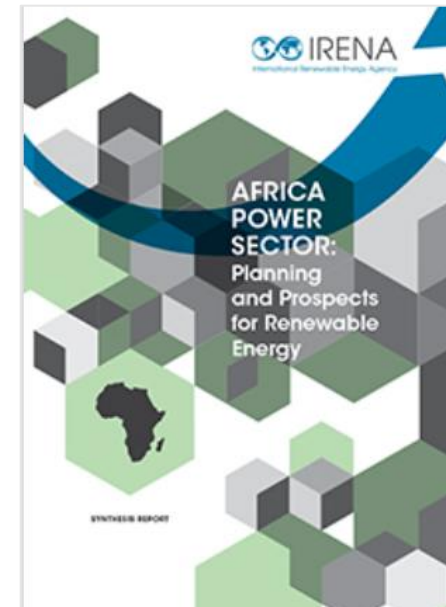
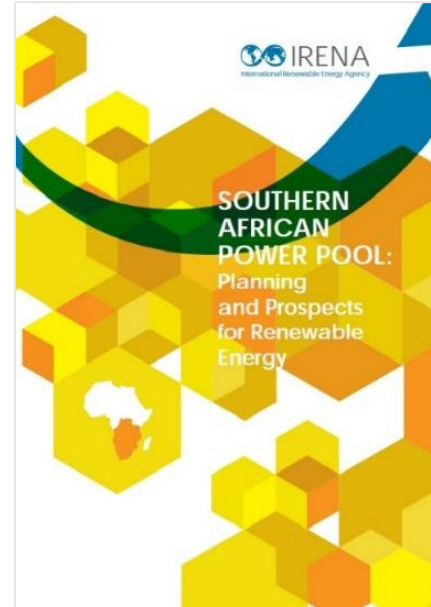
## Regional model analysis and planning programme

E.g. West Africa 6 month programme



IRENA's **SPLAT model** and databases are used as a starter model in these programmes

- Capacity expansion models for African power system using MESSAGE modelling framework
- Used as a starter model kit
- Built with IRENA's renewable energy databases

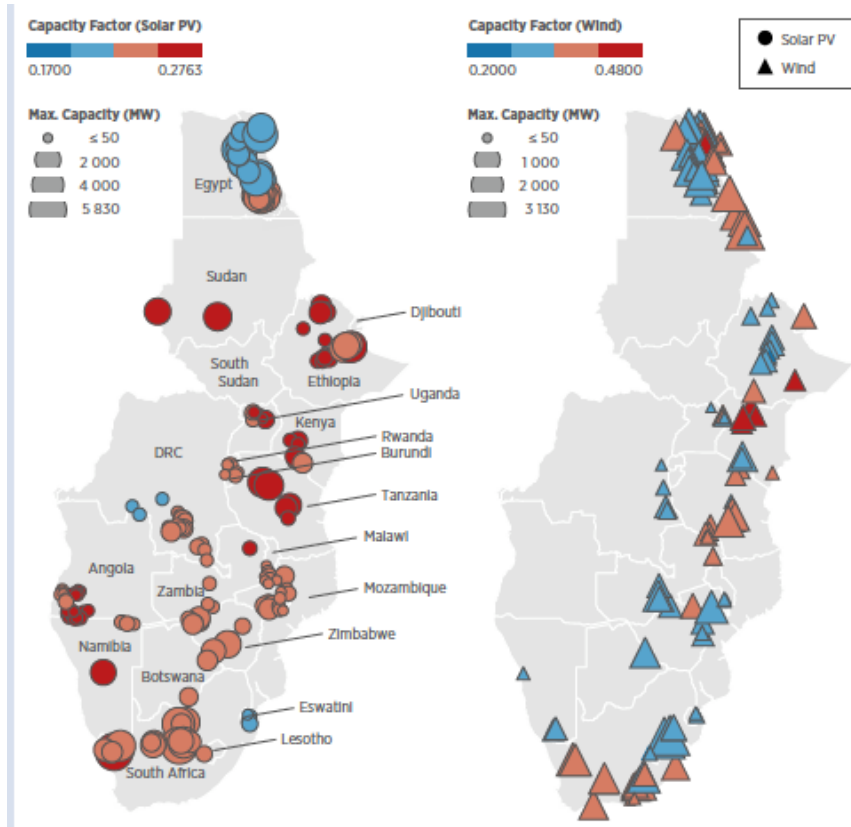


“Planning and prospects  
for renewable power in  
Africa series” since 2012

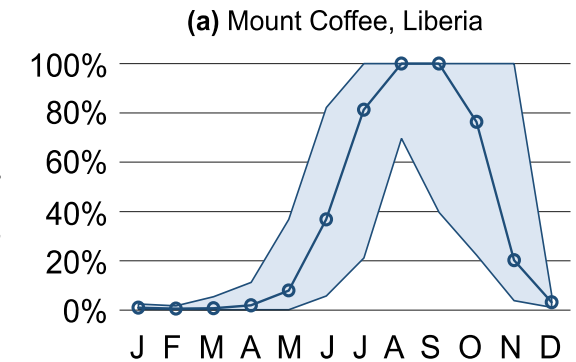
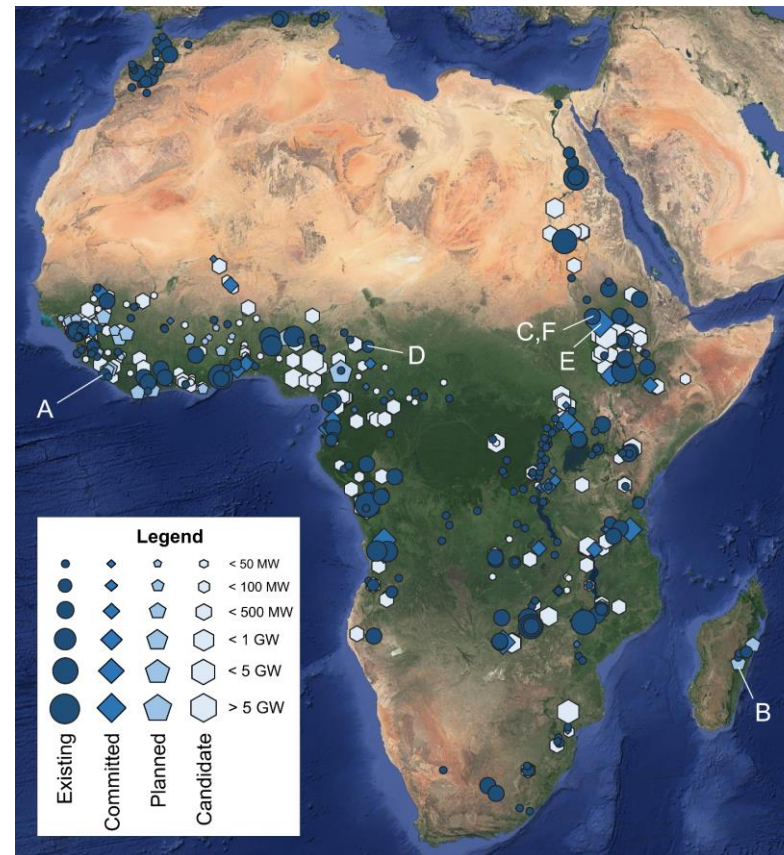


# Disseminate renewable data for planning models

## Solar and wind GIS based investment options



## Africa hydro power plant and profile database



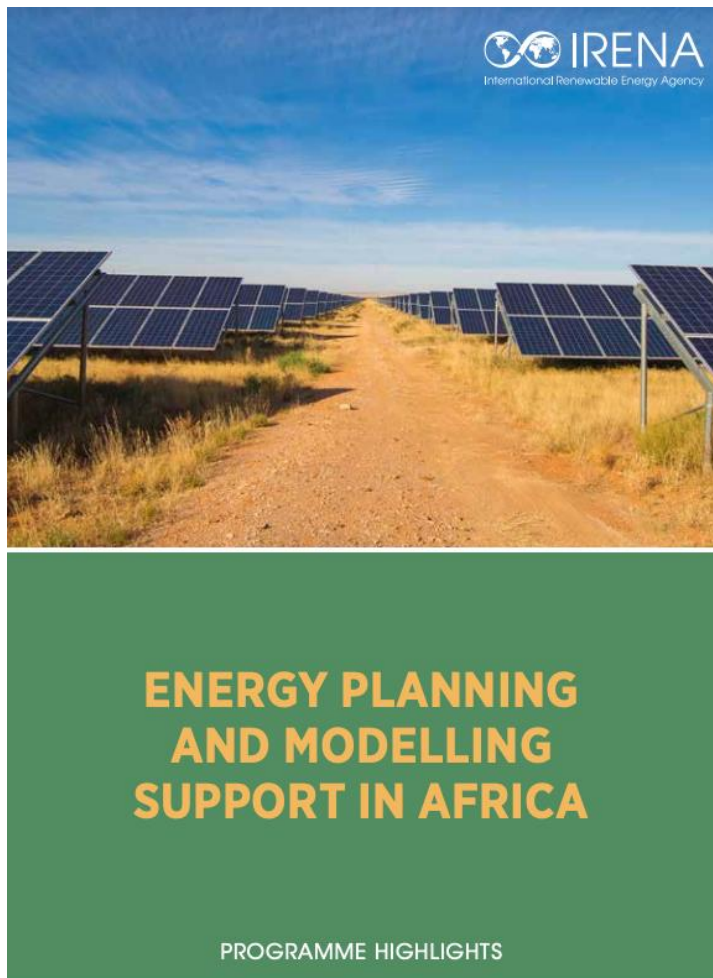
- IRENA is supporting Continental Masterplan development
- Will provide modelling methodologies and trainings

## IRENA and IAEA to Help African Union Develop Continental Power Master Plan with EU support

01 September 2021 | Articles



The International Renewable Energy Agency (IRENA) and the International Atomic Energy Agency (IAEA) have been selected as modelling partners for the development of the African Continental Power Systems Master Plan (CMP). The initiative is led by the African Union Development Agency (AUDA) with the technical and financial support of the European Union (EU), and is aimed at establishing a long-term continent-wide planning process. The two agencies' modelling tools will be the official planning models utilised in this initiative.



**For more info:**

**[www.irena.org/energytransition/  
Energy-Planning-Support](http://www.irena.org/energytransition/Energy-Planning-Support)**