



SINN Power

Wave energy technology and innovative power-generating systems

IRENA – Unlocking the potential of ocean energy around the globe

01 – 02 October 2019 Dublin, Ireland

Modularity reimaged:

- **Maritime structure solutions**
- **Power Electronics + Storage solutions**

Modular and scalable design



Reliable.

Continuous waves ensure constant energy supply



Flexible.

Individual power demand determines amount and configuration of modules



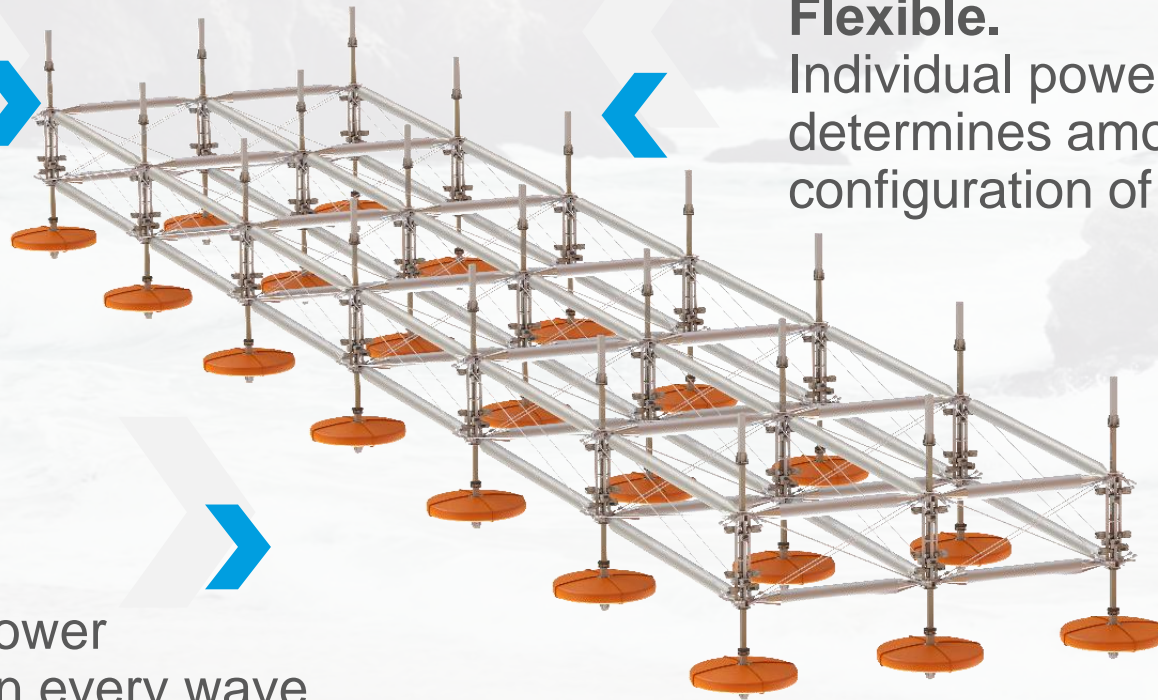
Smart.

Maximum power generation in every wave climate through intelligent regulation



Cost-efficient.

Mass-production enables cost-efficient assembly and maintenance



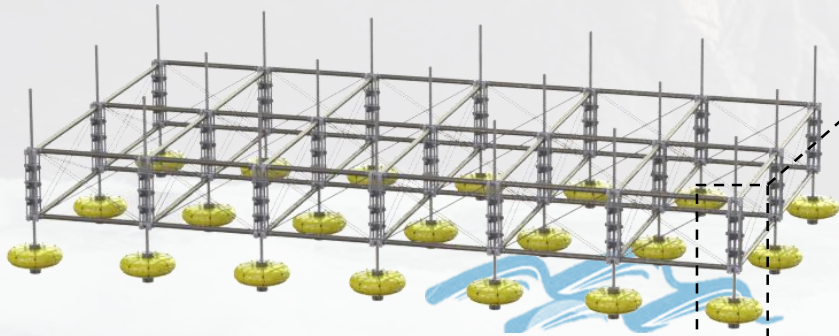
Clean energy around the clock



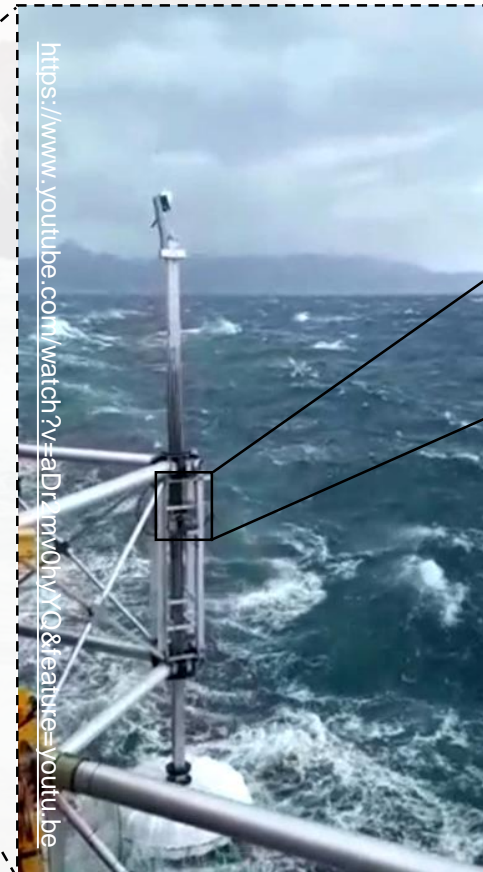
Maritime engineering & power-generating systems



Maritime Engineering



Mechatronics



Power Electronics



E-Machine (Input/Output)



MotorDrive DC/DC AC Inverter Supercap & battery

The SINN Power WEC:

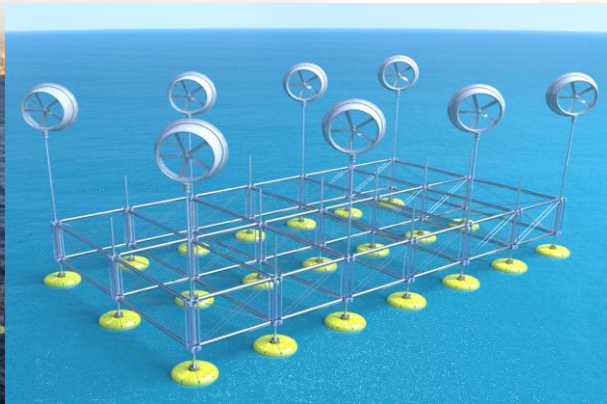
Floating platform for customer use

- ✓ Simple integration of electrical wave force absorption (possible)
- ✓ Easy to transport in ISO-Containers and easy to install (modular)

Modules of the SINN PowerTrain

- ✓ Extremely **robust** and **waterproof** (IP68)
- ✓ **Grid** and/or **off-grid** operation
- ✓ **Optional combination** of all PT modules
- ✓ **All components** can be connected in **parallel**

Maritime Engineering



Wave Energy Solutions (WEC)

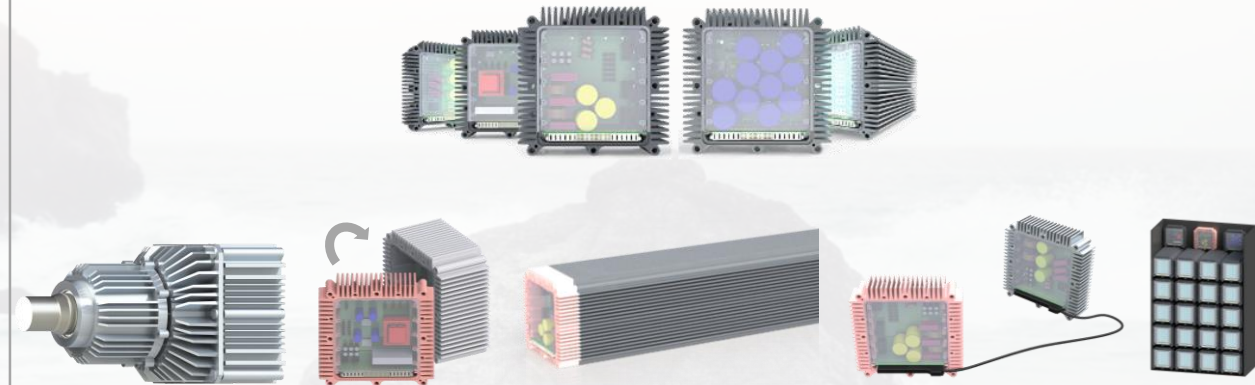
- **Structure-mounted WEC (harbours and off-shore platforms)**
- WEC arrays (large near-shore and off-shore power supply)

Floating Platforms

Active balancing and static floating platforms:

- Floating wind farms
- Floating PV plants
- Research purposes
- Aquacultures

SINN Power Electronics



PowerTrain

Customizable power-generating system:

- **IP68** protection class
- Rated power **3 – 5 kW**
- Active drive control
- Perfect sinus modelling
- Parallel connection

Power Electronics

All components are IP 68 classified

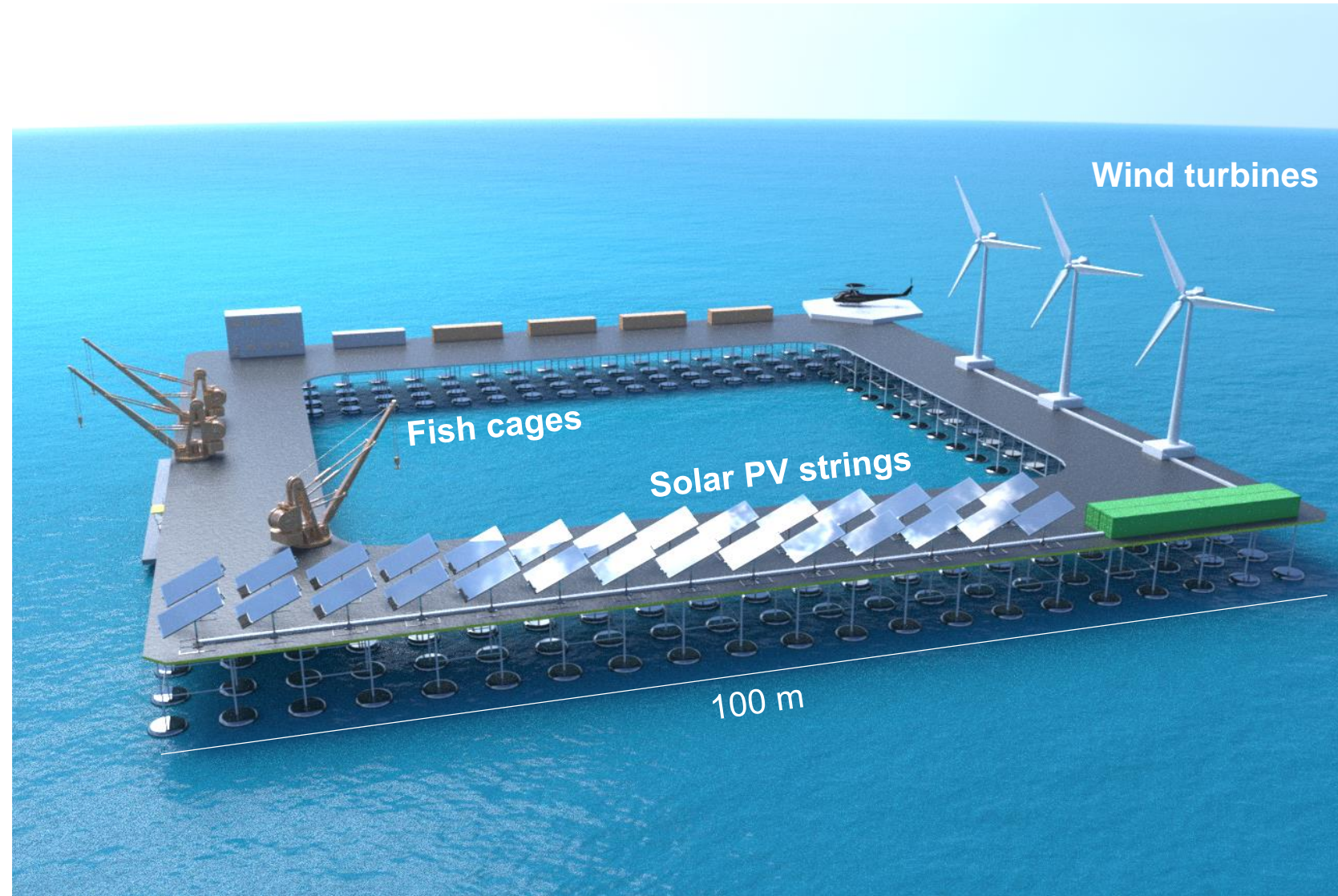
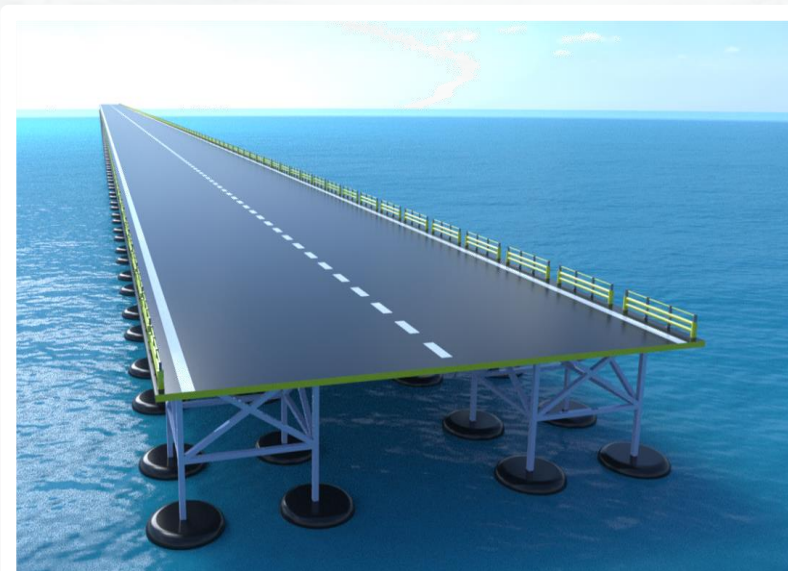
- **MotorDrive**
- **DC Converter**
- **AC Inverter**
- **Supercap**
- **LFP Storage**

Floating platform



Use cases

- Off-grid energy production
- Grid-tied energy production
- Floating platform for:
 - Aquacultures
 - Bridges
 - Off-shore wind parks



Contact

Management

Dr.-Ing. Philipp Sinn, CEO



contact@sinnpower.com
+49 (0) 89 9256 6192

www.sinnpower.com

SINN Power GmbH

Germeringer Str. 9
82131 Gauting
Germany

Vertretungsberechtigter Geschäftsführer: Dr.-Ing. Philipp Sinn
Registergericht: Amtsgericht München, HRB 215484



facebook.com/SINNPow
linkedin.com/company/sinn-power
instagram.com/sinnpower
twitter.com/SINNPow
youtube.com/c/SINNPowWaveTech
linkedin.com/company/sinn-power

Head of Business Development

Johannes Stuck



johannes.stuck@sinnpower.com
+49 (0) 89 9256 6192



SINNPOWER

Gefördert durch:



aufgrund eines Beschlusses
des Deutschen Bundestages



EUROPÄISCHE UNION



Existenzgründungen
aus der Wissenschaft

Supported via the German Federal Government's EXIST program from 07/2014 to 04/2017.